



QUARRY & AGGREGATE EQUIPMENT



1300 008 608 | RDOequipment.com.au





OUR SERVICE

OUR SUPPORT

OUR MACHINES

DISCOVER YOUR OPTIONS



JOHN DEERE

- DOZERS
- WHEEL LOADERS
- ARTICULATED DUMP TRUCKS

VERMEER

SURFACE MINERS

We don't just deal in iron, we are long-term partners for your business.

In a world where efficiency and productivity matter more than ever, you can't look past John Deere's production-class dozers, wheel loaders and articulated dump trucks.

Excavation to load and haul, RDO Equipment has the quarry and aggregate equipment you need to get the job done, and the service and support to back them.

RDO sells and services this equipment from 12 locations across Australia.





*We are more than your John Deere dealer.
RDO combines expertise with a drive to do
more for the companies we work with.*

First Class servicing... it's what we do best.

Our service fleet and field technicians are ready to support you wherever you are. We understand equipment is the lifeblood of your business, which is why RDO offers a level of service that reduces downtime and gets you back on the job quicker.

As part of fulfilling this commitment, our service technicians are OEM-trained, resulting in quicker diagnostics, faster repairs and increased productivity for your operation.

Whether it's routine preventative maintenance, annual inspections or anything in between, our team of knowledgeable equipment service experts care for your fleet like it's our own, so you can focus on getting the job done.









JOHN DEERE DOZERS

***STEADY &
ROCK SOLID***

JOHN DEERE

Production Class Dozers

When jobsites are rough and rocky, you need a crawler dozer that can handle the conditions.

With its new suspended double-bogie undercarriage that can absorb vibrations caused by rough operating conditions, the 1050K rides smoother and is more durable than previous models.

A reduction of peak vibrations in the cab by up to 75 percent helps operators carry on in comfort while moving faster, boosting production. But that is not all. Both Extended Life and Heavy-Duty undercarriage options with sealed and lubricated track (SALT) are available to match your application.

When it comes to your operation, we have smoothed the way for a pretty productive ride.

Performance

The John Deere production class dozers dual-path hydrostatic transmission allows you to push a full load through turns without losing material, unlike torque-converter transmissions on many competitor machines. The John Deere PowerTech™ engine delivers an excellent power-to-weight ratio to provide the traction needed to push more material. So, you can get more done without a lot of extra effort!

Economy

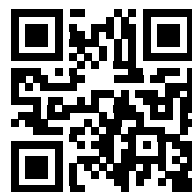
Standard Eco Mode maximises fuel economy without loss of performance, automatically adjusting engine rpm and transmission settings based on load to burn up to 15 percent less fuel depending on application.

Auto-idle automatically reduces engine speed when the machine is not moving, and no functions are active. Auto shutdown turns off the engine after extended inactivity.

Reliability

Tough and sturdy: John Deere dozers are designed for a long operational lifetime with careful attention to construction and material quality. All parts that are subject to particularly heavy loads are made from the strongest materials available, with sensitive areas optimally protected.

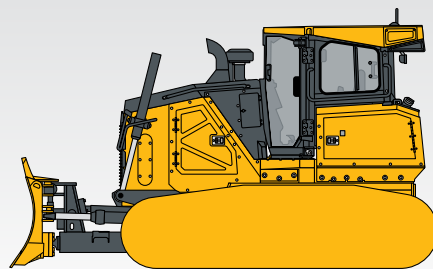
All of these factors make John Deere dozers reliable machines with the highest level of availability.



SCAN ME & SEE THE
1050K DOZER
IN ACTION



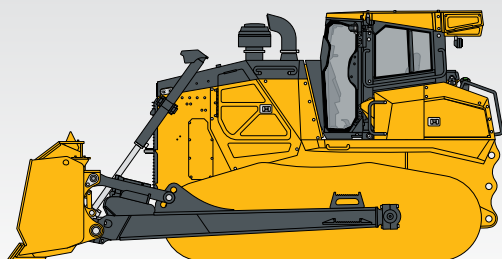
850L DOZER · XLT/WLT/LGP



- NET POWER: 168 KW (225 HP) @ 1700 RPM
- TRACK ON GROUND: 3300 MM
- OPERATING WEIGHT: 21,581 - 23,299 KG

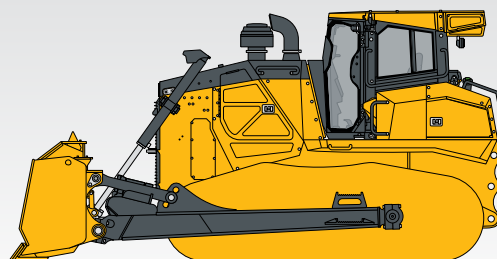


950K CRAWLER DOZER



- NET POWER: 198–209 KW (265–280 HP) AT 1,800 RPM
- TRACK ON GROUND: 3,214–3,431 MM
- OPERATING WEIGHT: 29,606–33,431 KG

1050K DOZER



- NET POWER: 261 KW (350 HP) @ 1800 RPM
- TRACK ON GROUND: 3419 MM
- OPERATING WEIGHT: 42,800 - 43,100 KG

KEY POINTS

CAB WITH INTEGRATED ROPS / FOPS PROTECTION

- Best all around view for the operator
- Higher safety and productivity

SEPARATE HYDRAULIC OIL COOLER

- Reliable cooling performance even in the hottest ambient temperatures
- Reduced fuel consumption due to demand-controlled fan

HD-RIPPER

- Excellent ripping performance in hard underground conditions
- Robust design for longevity

BOGIE SUSPENSION*

- Smoother operation
- Optimal traction

LED-LIGHTING*

- Guarantees best illumination of the working area
- Better working performance even in dark / bad light conditions

HYDROSTATICALLY DRIVEN COOLING FAN

- Fast engine warm-up and reliable cooling in each situation
- Laminar air flow facilitates a long radiator-life

DIFFERENT TYPES OF BLADES WITH HD-CUTTING EDGE

- High flexibility for all kind of material
- High productivity

*Optional feature





Comfort

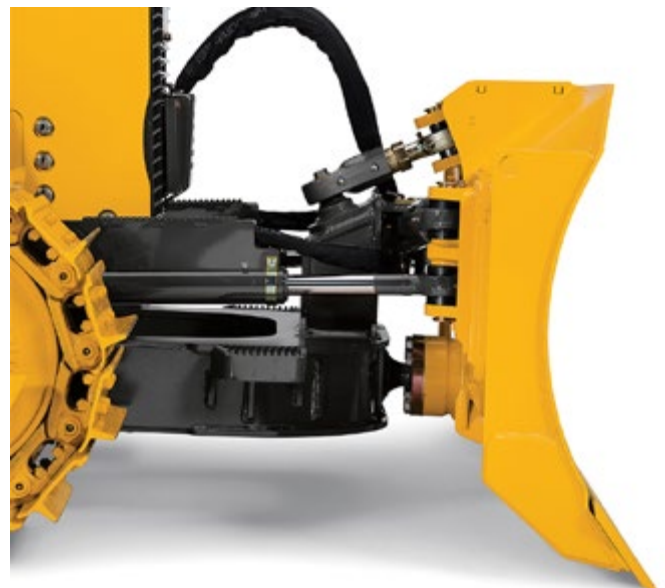
Independent track control speeds up or slows each side — for smooth, full-power turns and thanks to electro-hydraulic (EH) controls, John Deere production class dozers are grade-control ready, making adding a system as easy as plugging in the components, calibrating, and going to work, whether you prefer Leica, Trimble or Topcon.

Who wouldn't be more productive in the 1050K's noticeably quiet and spacious walk-through cab? This dozer is loaded with all the fatigue-beating amenities an operator needs to get "in the zone" and get more done, including a new suspended double-bogie undercarriage that reduces vibrations in the cab by up to 75 percent, smoothing the ride over rough terrain.

Maintainability

Large hinged doors provide access to dipsticks, fill tubes, maintenance free batteries, and vertical filters. Convenient service points make quick work of the daily routine. The operator station tilts a full 70 degrees in only minutes, for wide-open drivetrain component access.

The easily-cleaned cooler design features a standard reversing fan that automatically back-blows the cooler cores at preset intervals. Simply press a button to actuate the reversing cycle when needed.





JOHN DEERE ARTICULATED DUMP TRUCKS

***BUILT FOR THE
LONG HAUL***



E

JOHN DEERE Articulated Dump Trucks

Whether it's 26 tonne, 31 tonne, 41 tonne, or 46 tonne, our articulated dump trucks (ADTs) deliver impressive power and torque for exceptional power-to-weight ratios and fast cycles. So you can keep working on steep slopes, through deep ruts, and in slippery muck.

Onboard diagnostics help keep the operator in the know and on the go. Smart features such as on-the-fly auto-differential lock, tyre-pressure monitoring, and onboard payload weighing help boost productivity and uptime, while helping to keep operating costs down.

Performance

Designed for maximum work output in the harshest of environments. The large dump body supported by the sturdy drive train is a guarantee for efficient quarrying.

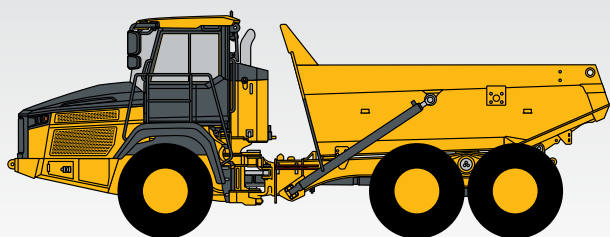
Even in tough stone breaking operations, the articulated dump truck stands out with its impressive driving properties and, thanks to the innovative retarder performance, is always safely in motion.

The 460E could go where competitor trucks couldn't, while also being better on fuel, production, and comfort – productivity increased by 300 tonnes per truck per day!

And with RDO Equipment's back up and support it was a no-brainer.

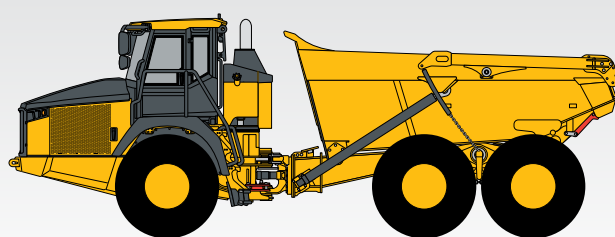
– Greg, Hardy Mining

310E ARTICULATED DUMP TRUCK



- NET ENGINE POWER: 26 KW (353 HP) @ 1900 RPM
- RATED PAYLOAD: 28,125 KG
- HEAPED CAPACITY: 17.5 M³

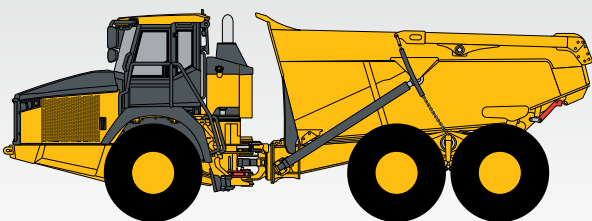
410E ARTICULATED DUMP TRUCK



- NET ENGINE POWER: 330 KW (443 HP) @ 1900 RPM
- RATED PAYLOAD: 37,266 KG
- HEAPED CAPACITY: 22.7 M³



460E ARTICULATED DUMP TRUCK



- NET ENGINE POWER: 359 KW (481 HP) @ 1900 RPM
- RATED PAYLOAD: 41,819 KG
- HEAPED CAPACITY: 25.5 M³



KEY POINTS

- On-board Weighing System
- Downhill Descent Control
- Shuttle Shifting
- Ground Level Fueling
- On-the-Fly Differential Locks
- Dump Body Roll Over Protection
- Reversible Fan*
- Adaptive Suspension Control System
- Stay Tight Oscillation Joint
- Auto Dump
- Powered by John Deere Engines
- Ground Level Daily Inspection Points
- JDLink Telematics
- Tyre Pressure Monitoring*

*Optional feature





Economy

The fuel efficient, reliable John Deere ADT's are designed with operator comfort and ease of use in mind.

With Eco Mode, the ADT automatically adjusts engine power and transmission settings based on load while limiting horsepower.

Reliability

The E-Series ADT's are designed and manufactured with state of the art tools and techniques by a quality conscious workforce. Heavy duty, purpose-built John Deere axles are lubricated, filtered and cooled for longer life.

Routing of electrical and hydraulic systems has been simplified to improve reliability, while also equipping the machines for tough quarrying applications.

Comfort

The quiet, pressurised Deere-designed cab features operator-friendly options that include automatic temperature control, three drive modes, large easy-to-navigate monitor, ample storage for your lunch box and devices, keyless start and a tilt / telescopic steering wheel.

Operators can set limits for the rear chassis level when unloading, meaning that if these limits are exceeded then the dump body will not rise, giving the operator a safer experience.

Maintainability

Maintenance is easier than ever. Remote grease points are bulk-headed and sight gauges have been included to speed up fluid level checks.

At ground level, open the front grill and you will find the oil check and fill, windshield washer, fuel and oil filters and air filters. You can check the transmission fluid by opening the compartment behind the left side of the cab on large frame ADT's or use the site glass on small frame ADT's.

All drivetrain and hydraulic components are easily accessible under the tilt cab. The tilt cab can be raised to full height with the cab jack. Bottom guards and hinged access panels make additional access easier too.



JOHN DEERE WHEEL LOADERS

MATERIAL MASTER



MAXIMUM OPERATOR COMFORT FOR GREATER PRODUCTIVITY

- Automatic central lubrication system (L 550 – L 580 optional / L 586 as standard)
- Premium display (Touchscreen)
- Joystick steering or 2-in-1 steering*
- 3 way continuously adjustable steering column
- Ride control
- Steering stabilisation

PRODUCTIVE AND SAFE WORKING

- Anti-slip steps and sturdy handrails
- Rear space monitoring camera via display
- Headlights halogen (double design on engine hood)

HIGHEST LEVEL OF PERFORMANCE

- Automatic self-locking differentials in both axles

SHORT SERVICE TIMES FOR GREATER PRODUCTIVITY

- Radiator easy to maintain
- Reversible fan drive*
- Air pre-cleaner TOP AIR*
- Important maintenance points visible in access area

RUGGEDNESS AND QUALITY FOR DURABLE MACHINES

- Tilt cylinder protection*
- Special buckets in HD or rock version*
- Lamp carrier in steel design*
- Special tyres for quarrying industry*
- Guard for headlights*
- Fuel tank steel version
- Crash protection, rear*
- Tyre protection chains*
- Widening for fender and rear mudguard*

PRODUCTIVE AND SAFE WORKING

- Soundproof ROPS / FOPS cab
- Safety roof over cab*
- Additional working lights, rear*
- Safe, non-slip ladder access to cabin
- Anti-slip step with door locking
- Folding windscreen guard for increased safety and easy access for cleaning*
- Access assistance to facilitate cleaning windscreen

*Optional feature

JOHN DEERE

Production Class Wheel Loaders

Designed for the toughest and most demanding work sites, the John Deere Production Class L-Series wheel loaders offer customers the power and comfort they need on the job.

Four models — including the 744L, 824L 844L and 844L AH — are equipped with a roomier cab, new electrohydraulic (EH) controls and an improved HVAC system, resulting in better overall all-day comfort and productivity.

Performance

The new machines are more powerful than the previous models, with an increase of up to nine percent in horsepower. The 744L, 824L, 844L and 844L Aggregate Handler models offer 315 horsepower (235 kW), 343 horsepower (256 kW), 417 horsepower (311 kW) and 429 horsepower (320 kW), respectively.

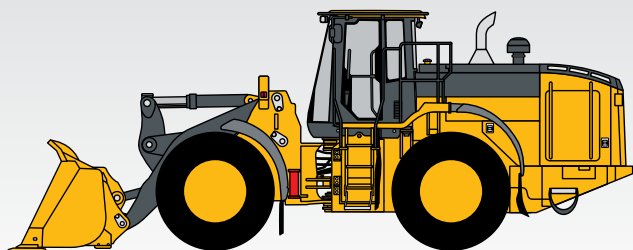
Economy

All units boast improvements in fuel efficiency, with the 824L specifically being equipped with a 9.0-litre engine, like the 744L, lowering fuel consumption by up to 12 percent.

The 844L is equipped with a proven 13.5-litre engine, reducing fuel consumption by up to 7 percent. At maximum handling capacity and efficiency, this reduces operating costs significantly, further increasing profitability.

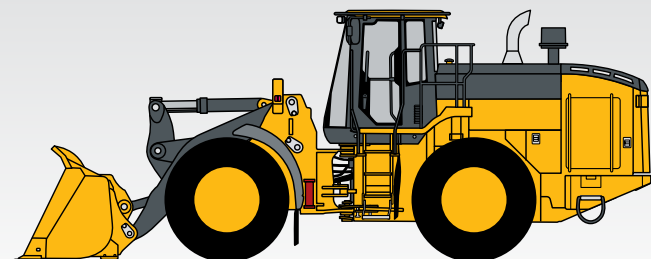


744L WHEEL LOADER



- NET POWER: 236 KW (316 HP) @ 1,500 RPM
- OPERATING WEIGHT: 24,894–25,445 KG
- BUCKET CAPACITY: 4.10–4.5 M³ (5.25–5.85 CU. YD.)

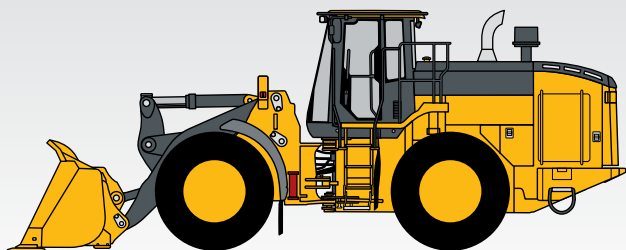
824L WHEEL LOADER



- NET POWER: 256 KW (343 HP) @ 1,600 RPM
- OPERATING WEIGHT: 27,508–27,980 KG
- BUCKET CAPACITY: 4.6–5.2 M³ (6.0–6.75 CU. YD.)

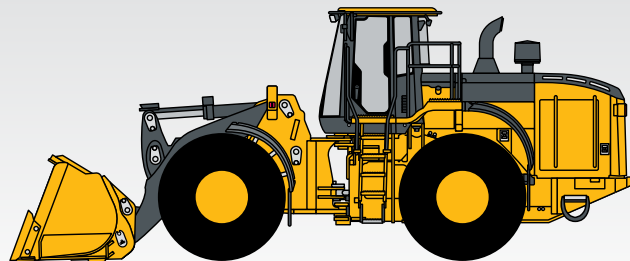


844L WHEEL LOADER



- NET ENGINE POWER: 311 KW (417 HP) AT 1,600 RPM
- OPERATING WEIGHT: 33,666–34,500 KG
- BUCKET CAPACITY: 4.8–6.1 M³

844L AGGREGATE HANDLER WHEEL LOADER



- NET POWER: 320 KW (429 HP) AT 1,400 RPM
- OPERATING WEIGHT: 36 310–36 432 KG
- BUCKET CAPACITY: 7.1–7.5 M³

KEY POINTS

- Soft stop features allow boom or bucket to gradually stop when either the kickout position is reached or the operator releases the control
- Standard joystick steering; steering wheel*
- Dedicated steering pump for quicker hydraulic cycle times for combined functions
- Programmable return to dig
- Two programmable multifunction buttons on the bucket lever
- Heated and ventilated seat with seat pan and tilt adjustment
- Cab is 79% wider at the floor compared to previous models
- Cab features radio, backup camera, automatic temperature control and power-adjusted exterior mirrors
- Cylinder snubbing gradually slows cylinders nearing the end of stroke
- Horsepower: 315 hp (744L); 343 hp (824L); 417 hp (844L) and 429 hp (844L Aggregate Handler model)
- Seat belt minder system alters owner when someone is not using the seat belt
- Factory-installed auto-lube system
- Factory coupler*

*Optional feature





Comfort

One of the most notable features on the L-Series wheel loaders is the more comfortable cab, which has several features to improve operability.

First, the standard premium cab is roomier, with 75 more millimetres of legroom and storage space behind and next to the seat compared to the K-Series machines. The new seat offers heating and ventilation, as well as seat pan and tilt adjustment. The cab offers premium radio, a backup camera, automatic temperature control and power-adjusted exterior mirrors, and it is UHF radio-ready.

Additionally, the cab door is 79 percent wider at the floor compared to the previous models, allowing for easier entry and exit, and the platform has been cut out around the top step for improved visibility.

Reliability

Reliability is what John Deere Wheel Loaders are known for due to several changes made to the machines. Additionally, the updated HVAC system includes several upgrades to improve cool capacity, including relocation of the AC unit, alteration of the fresh air filter exchange and the use of a brushless motor to provide infinite fan speeds, increasing airflow.

Overall, the routing of electrical harnesses and hydraulic hoses features additional retention points, reducing rubbing and increasing uptime. Finally, the L-Series models feature a window washing platform with a fall arrest anchor point that is tested to 2,200 kilograms, making it easier to clean windows.

Maintainability

All daily service points including fuel are conveniently grouped on the left side of the machine for easy access. The new standard factory-installed auto-lube system ensures automatic greasing takes place while the machine is operating for more effective grease distribution.

Quad-Cool design places coolers in a unique boxed configuration that is isolated from engine heat, for increased efficiency and durability. Hydraulic reversing fan automatically reverses at predetermined intervals, or can be programmed through the monitor, to eject debris from the cooler cores.

The L-Series wheel loaders are supported by the John Deere Connected Support™ offering. Enabled through the JDLink telematics connection, Connected Support leverages a suite of dealer and factory tools, including the Remote Diagnostics and Programming and Expert Alerts, to deliver increased productivity and uptime, and to lower daily operating costs.



The proven choice, whether you're benching a road tunnel or surface mining for selective ore extraction.

Vermeer's surface miners offer, fast, precise and on-grade surface excavation for high volume mining and civil excavation applications.

Whether it's a mine, building site, road tunnel or airport runway, if your project requires precision rock excavation while managing noise levels, vibration and air quality, contact your local Vermeer Australia team to learn more. We have the solutions and project experience to help you develop your methodology.



T1255 CHAIN DRIVE SURFACE MINER



Efficiently conduct surface mining extraction; remove ground surface; or create a smooth, level area for site preparation, road construction or soil remediation with the T1255 Terrain Leveler chain drive attachment.

- FUEL TYPE: DIESEL
- POWER: 600 HP (447 KW)
- CAPACITY: 365.8 CM (144 INCHES) CUTTING WIDTH AND 68.6 CM (27 INCHES) CUTTING DEPTH

T1255 DIRECT DRIVE SURFACE MINER



With the drive motor mounted directly to the cutter drum, it maximises work efficiency and reduces wear costs associated with other types of transmissions.

Hydraulic low-speed, high-torque motors on each side of the cutter head dish out more direct drive power for improved productivity.

- FUEL TYPE: DIESEL
- POWER: 600 HP (447.4 KW)
- CAPACITY: MAX. CUTTING DEPTH 21 INCHES (53.3 CM)



T1255 SINGLE-SIDED DIRECT DRIVE SURFACE MINER



With the drive motor mounted directly to the cutter drum, it maximises work efficiency and reduces wear costs associated with other types of transmissions.

Hydraulic low-speed, high-torque motors on each side of the cutter head dish out more direct drive power for improved productivity.

- FUEL TYPE: DIESEL
- POWER: 600 HP (447.4 KW)
- CAPACITY: 53.3 CM (21 INCHES) CUTTING DEPTH

T1655 DIRECT DRIVE SURFACE MINER



The T1655 dual tracks and low centre of gravity allow for easy maneuverability and stability over the changing and diverse surface conditions.

- FUEL TYPE: DIESEL
- POWER: 1200 HP (895 KW)
- CAPACITY: MAX. CUTTING DEPTH 71CM (28 INCHES)

JOHN DEERE REMAN Parts and Components

Remanufactured (Reman) parts and components are an affordable, premium repair solution of all major components for keeping your fleet up and running. They provide same-as-new performance and reliability while significantly reducing the total cost of your equipment, and while reducing the impact on the environment. And, they provide more options at repair and overhaul time to allow you to be in control of your downtime, maximise your uptime and lower costs.

Reman parts are factory remanufactured to their original OEM specifications so they deliver good-as-new performance and a service life that meets or exceeds that of the original with the usual John Deere quality using only genuine OEM parts and approved remanufacturing processes.

Plus, Reman parts carry a one year Reman parts warranty.

Why choose Reman parts and components?

- Reduce downtime by providing an exchange component
- 25-30% saving compared to new component - reduced total cost of ownership and increased service life of your machine
- One-year, unlimited-hour parts, labour, and consequential damage warranty if dealer-installed
- Environmentally friendly – fewer parts are thrown away
- Components can be upgraded to take advantage of the latest technological advances
- Increased profitability by recapturing the full potential of your parts and engine





*We are a team of problem-solvers.
Listeners. Go the extra mile's.
We are technicians. Specialists.*

*And on some days we
make the impossible, possible*



DARWIN

NORTHERN TERRITORY



TOWNSVILLE



MACKAY



EMERALD



ROMA



TOOWOOMBA



BRISBANE

SOUTH AUSTRALIA



ADELAIDE



ALBURY



SYDNEY

VICTORIA



MELBOURNE



LAUNCESTON

TASMANIA

YOUR LOCAL **DEALER**

ADELAIDE

9-11 Hakkinen Road,
Wingfield, SA 5013

P: 08 8213 8900

ALBURY

3 Reiff Street,
Lavington, NSW 2641

P: 02 6049 9200

BRISBANE

147 Archerfield Road,
Richlands, QLD 4077

P: 07 3564 4400

DARWIN

22 McKenzie Place
Yarrawonga, NT 0830

P: 08 8936 6800

EMERALD

46 Gregory Highway
Emerald, QLD 4720

P: 07 4843 8500

LAUNCESTON

17-23 Montague Street,
Invermay, TAS 7248

P: 03 6335 7300

MACKAY

2276 Bruce Highway
Kuttabul, QLD 4740

P: 07 4966 3300

MELBOURNE

415 Fitzgerald Road,
Derrimut, VIC 3026

P: 03 8851 6200

ROMA

137 Raglan Street
Roma, QLD 4455

P: 07 4578 8500

SYDNEY

45 Eastern Creek Drive,
Eastern Creek, NSW 2766

P: 02 9835 7200

TOOWOOMBA

21 Carrington Road
Toowoomba, QLD 4350

P: 07 4631 4800

TOWNSVILLE

696 Ingham Road,
Mt Louisa, QLD 4818

P: 07 4774 2427



1300 008 608

RDOequipment.com.au

