

G-SERIES
SKID STEERS



JOHN DEERE

320G / 324G / 330G / 332G



**WORK HARDER ...
AND SMARTER**



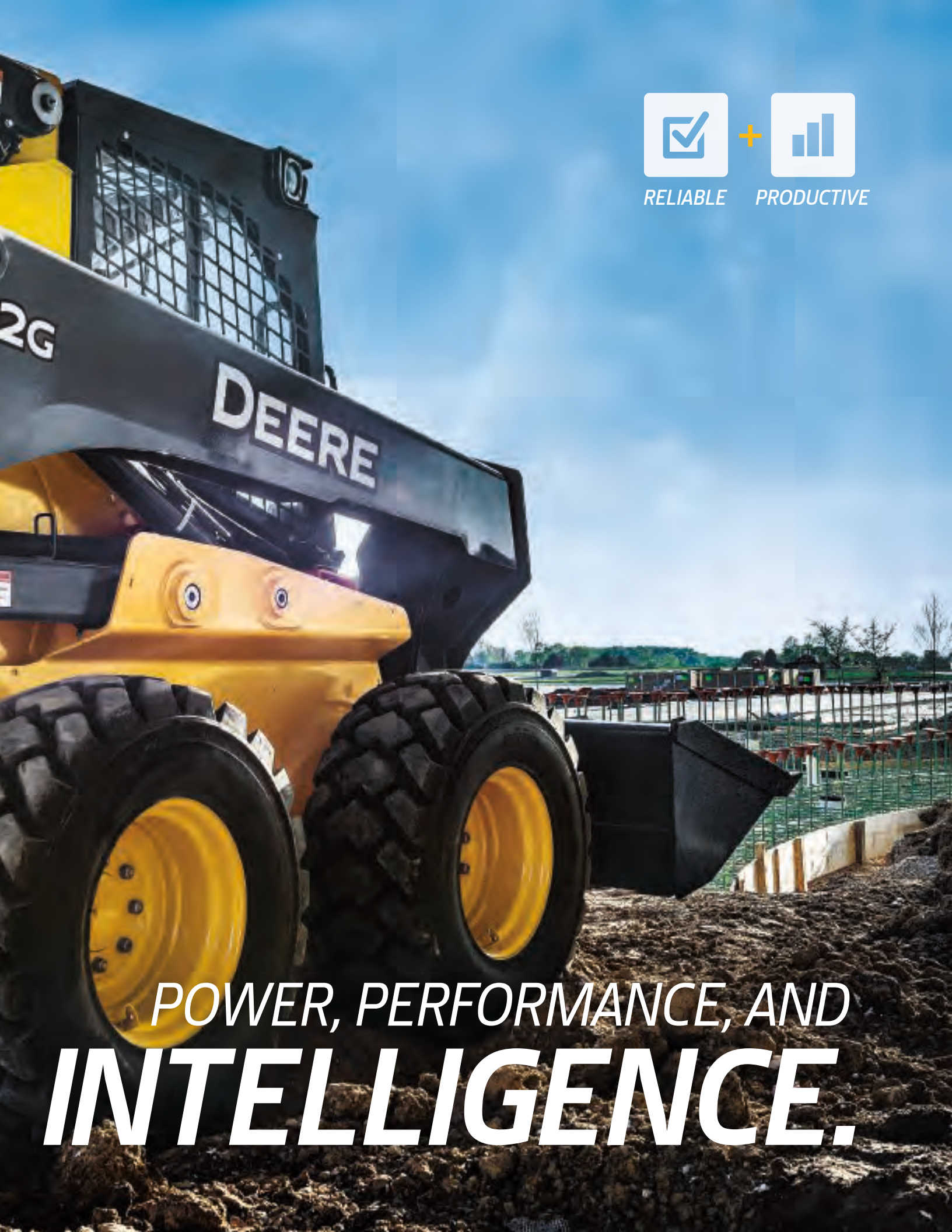
THE G-SERIES



RELIABLE



PRODUCTIVE



POWER, PERFORMANCE, AND
INTELLIGENCE.



YOUR INPUT IS OUR INSPIRATION.

You run 'em, so why wouldn't we pick your brain to learn what you need in a skid steer? As participants in our Customer Advocate Group, owners and operators like you helped point the way for the G-Series. Challenged and inspired by your thoughts and ideas, we went to work on these next-generation mid- and large-frame machines. We added more power under the hood and increased lift height, dump clearance, reach, stability, and breakout force. And we paid attention to the little things that are a big deal to our customers, like optional heated seat, side lighting, and rearview camera — for more productivity and uptime, at lower daily operating costs.

GET YOUR SWAGGER ON

TAKING IT ALL IN STRIDE.

Loaded with impressive specs and productivity-enhancing features, G-Series Skid Steers tackle the toughest tasks and come back for more.

Unleash the beast

Extreme pushing power and bucket breakout forces deliver the tractive effort and leverage to carve out clay, handle heavy loads, and power through piles.

Hydraulic boost

Increased auxiliary hydraulic flow and power enable G-Series Skid Steers to make the most of an even broader range of attachments.

Speed demons

Standard on the 330G and 332G (optional on the 320G and 324G), two-speed drivetrain delivers travel speeds up to 12 mph, for rapid work cycles.

Generous power

Turbocharged diesels meet rigid emission standards, run smooth, and pack plenty of power and torque.

Run longer

Fluid-efficient diesels and large tanks enable daylong operation. So you can get more done between fill-ups.

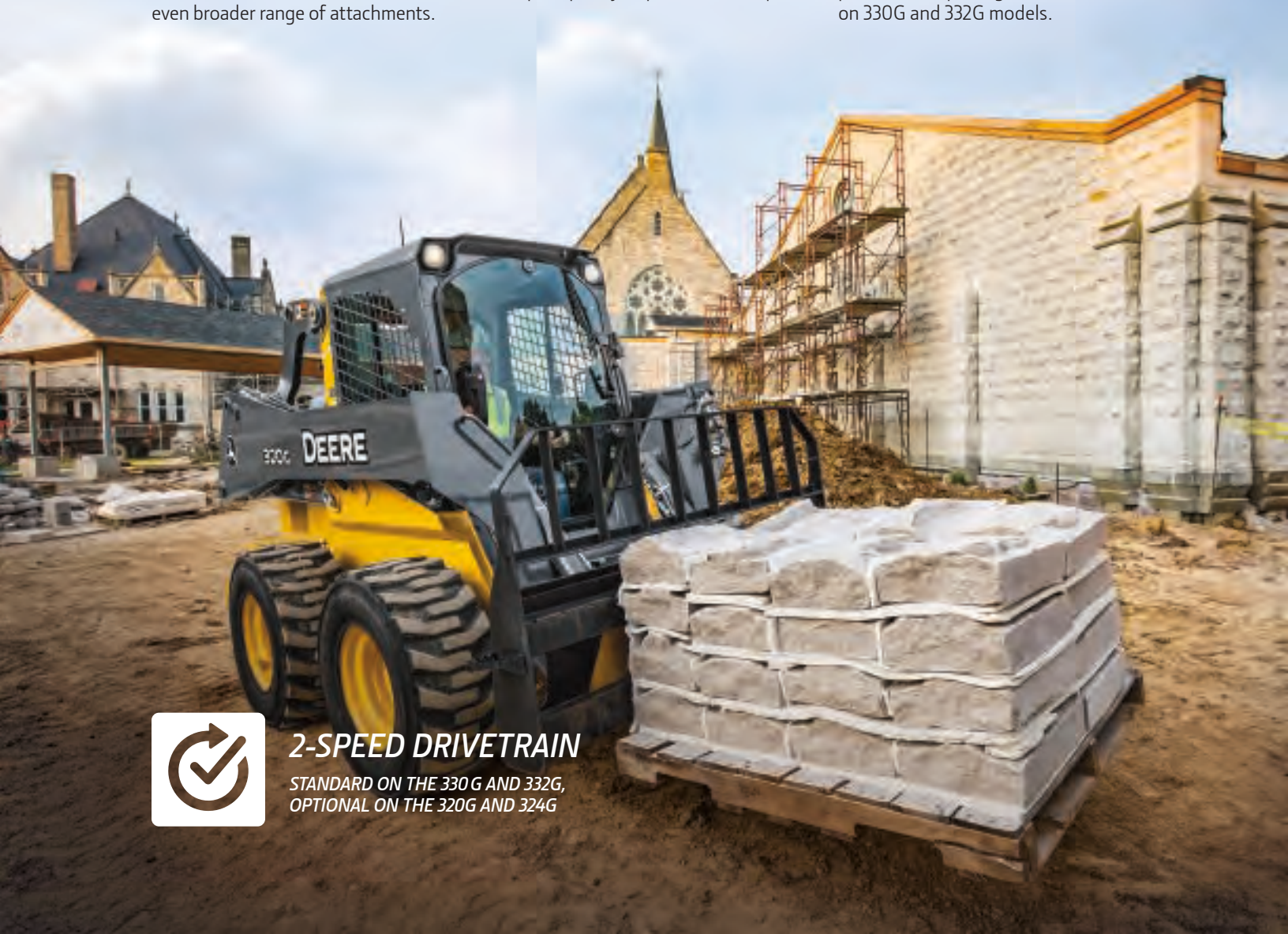
EH boom performance package

Shorten cycle times and speed production in repetitive boom applications with the optional electrohydraulic (EH) boom performance package available on 330G and 332G models.



2-SPEED DRIVETRAIN

STANDARD ON THE 330 G AND 332G,
OPTIONAL ON THE 320G AND 324G





STANDOUT FEATURE

***DO MORE
WITH ONE.***



STAND TALL

EXTEND YOUR REACH.

The refined vertical-lift loader design of these compact models rises higher and reaches farther than previous models, for quicker and easier loading. G-Series Skid Steers dish out substantially greater boom breakout force, too, so you accomplish more with just one skid steer. Plus they work more comfortably in tight quarters, and they're easy to trailer. Who says you can't have it all?

Dig in

Increased breakout force over our previous models makes lifting heavy loads easier. Helps heap the bucket and keep big loads coming, too.

Carry more, and get it there

Boom design keeps the load close to the machine for better stability. Low center of gravity, up to 35-deg. bucket rollback, and optional ride control and self-leveling also help keep buckets heaped and forks fully loaded.

Heavy lifter

Increased rated operating capacities of up to 3,600 lb. provide the muscle you need to master heavy loads.

Load warrior

Height to hinge pin up to 11 ft. enables these machines to easily load tandem-axle dump trucks, feed mixers, and fill hoppers. You'll also appreciate the additional reach to truck-bed height when handling pallets of pavers or other heavy materials.



**MASSIVE BUCKET
BREAKOUT FORCES
AND AUXILIARY FLOW**



AT HOME IN THE CAB

COMFORTABLE AND EFFICIENT OPERATION.

Spacious, comfortable cab is tightly sealed to keep out noise and dust. Available options include a four-season cab, Bluetooth® radio, and a heated seat.

Heads-up operation

Easy-to-read LCD monitor provides a wealth of machine data and control — including vital operating conditions and advanced diagnostics.

Push-button convenience

Optional sealed-switch module controls keyless start and anti-theft settings, plus fingertip activation of numerous machine functions including optional ride control and self-leveling.

All-weather comfort

Add a heated air-suspension seat to the heated and air-conditioned pressurized cab to enhance comfort all year.

Light it up

Excellent all-around visibility has been further enhanced with customer-inspired LED side-lighting and rearview-camera options.

Get good grades

Available on the 330G and 332G, optional onboard grade-indication provides a real-time readout of cross-slope (roll of the machine) and mainfall slope (pitch of the machine) on the in-cab monitor:

- Reference **absolute value**, or machine relationship to an absolute flat plane, to easily grade a flat pad.
- Access **relative value**, or machine relationship to the existing grade, to make a steeper existing grade.



OPTIONAL 4-SEASON CAB FOR ALL-WEATHER PRODUCTIVITY



Your controls, your way

Choose the control styles and performance features that best fit your needs:

- Electrohydraulic (EH) ISO-pattern joystick controls come standard on the 330G and 332G (optional on the 320G and 324G)
- Optional ISO-H switchable joystick controls and EH joystick performance package on all models*
- Mechanical foot controls come standard on the 320G and 324G

- Optional EH 4-way switchable controls, including EH foot control, ISO joystick control, H-pattern joystick control, and ISO and foot controls on the 330G and 332G
- Optional ISO controls with programmable detents with the EH joystick performance package* and the EH boom performance package on the 330G and 332G†

*EH joystick performance package features switchable accelerator/decelerator, selectable propel speeds, creep control, boom- and bucket-speed settings, and 12-volt 3- and 14-pin attachment-control harness with dash-mounted 4th-function rocker switch.

†EH boom performance package features include EH bucket self-level up and down, return to dig, return to carry, and boom-height kick-out.



*MORE THAN
**TOUGH
ENOUGH.***

BANK ON THIS

HEAVY-DUTY UPTIME.

Like the rest of the John Deere lineup, the G-Series is loaded with time- and money-saving features. When you know how they're built, you'll run these Deere.



Cool idea

Unique V-plenum (320G and 324G) and Tri-Cool (330G and 332G) designs employ large coolers for impressive performance in severe, high-load conditions.

Heavy-duty drivetrains

Oil-bathed final-drive chains withstand the daily grind and almost never need adjustment.

Hydraulics in boom

Auxiliary hydraulic lines and wiring are routed through the boom where they're protected from damage.

Handy component access

These skid steers share components such as engines with our CTLs and compact excavators, which streamlines the filters and fluids you need on hand when you run a Deere fleet.

GET CONNECTED

MULTIPURPOSE MULTITASKERS.

With over 100 models of available John Deere attachments, your G-Series Skid Steer can be configured for a wide variety of work.

Work your connections

Universal Quik-Tatch™ enables you to go from bucket, to forks, to whatever, in just seconds, to accomplish more with one machine. Generous standard and optional high-flow auxiliary hydraulics let you effortlessly run powered attachments such as planetary augers, hydraulic hammers, and trenchers.

Cleared for takeoff

A rugged root rake, rotary cutter, or mulching head can help tackle tough land-clearing tasks.

Extra help on the farm

For hauling hay, cleaning pens, rebedding stalls, or any number of other agricultural chores, we've got bale huggers, bale spears, silage defacers, material/manure scrapers, grapples, forks, and buckets to get it done.

Landscape tools

Landscape and nursery options include nursery forks, rotary tillers, planetary augers, pallet forks, power rakes, dozer blades, and roller levels, to name a few.

Snow business

Equipped with a snow blade, blower, or pusher, G-Series Skid Steers make quick work of cleaning up when winter heads your way.

Street-smarts

Perfect for concrete or asphalt flatwork, our angle brooms, cold planers, vibratory rollers, hydraulic hammers, and a wide range of buckets help you master roadwork.



Choice is good

Choose from rock, multipurpose, construction, utility, tooth, grading-heel, and rollout buckets in varying widths and capacities. Extreme-duty 90-in. tooth, serrated, or smooth-edge bucket helps you maximize every cycle.



SET YOUR SITES ON
***GETTING
MORE DONE.***

LET US SWEAT THE DETAILS

MAINTENANCE SIMPLIFIED.



JDLINK™ machine monitoring

Optional JDLINK provides machine data and health alerts to help you decrease costly downtime.

Up and away

Tilt the hood up for convenient ground-level access to dipstick, fuel- and fluid-filler necks, and filters. Operator's station swings up and out of the way in less than five minutes for wide-open drivetrain access.

Cooler core cleanout

Hinged hood and easy-to-remove side shields yield wide-open access to coolers, simplifying core cleanout. Fan option can be set to automatically reverse to clear core-clogging buildup.

Easy cab cleaning

If you run a rental yard or are just a neat freak, you'll appreciate the convenient cab-footwell floor access that helps speed cleanout. Cab side windows also remove easily for cleaning.

Effortless service checks

Conveniently positioned dipstick and filler necks feature color-coded handles and caps to simplify checks and additions. Handy access eases refills of both fuel and diesel exhaust fluid (DEF)* tanks. See-through reservoirs and sight gauges reveal hydraulic oil and windshield washer fluid levels at a glance.

**330G and 332G only; DEF fluid not required on the 320G and 324G.*





320G / 324G SPECIFICATIONS

Engine	320G	324G
Manufacturer and Model	Yanmar 4TNV98C (optional 4TNV98CT)	Yanmar 4TNV98T Yanmar 4TNV98CT
Non-Road Emission Standard	EPA Final Tier 4/ EU Stage IV	EPA Interim Tier 4/ EU Stage IIIA
Cylinders	4	4
Gross Rated Power (ISO 14396)	51.7 kW (69 hp) at 2,500 rpm	55.0 kW (74 hp) at 2,500 rpm
Net Peak Power (SAE J1349 / ISO 9249)	49.4 kW (66 hp) at 2,500 rpm	52.5 kW (70 hp) at 2,500 rpm
Peak Torque	241 Nm (178 lb.-ft.) at 1,625 rpm	280 Nm (207 ft.-lb.) at 1,800 rpm
Displacement	3.3 L (203 cu. in.)	3.3 L (203 cu. in.)
Rated Engine Speed	2,500 rpm	2,500 rpm
Torque Rise	22% at 1,625 rpm	34% at 1,800 rpm
Aspiration	Naturally aspirated (optional turbocharger)	Turbocharged
Air Cleaner	Dry dual element	Dry dual element
Cooling	320G / 324G	
Fan Type	Variable-speed hydraulic drive standard / reversing fan drive optional	
Powertrain		
Type	Hydrostatic-manual or electrohydraulic; 4 – 80 heavy-duty (HD) continuous-loop chain	
Travel Speeds		
Single Speed, Standard	11.1 km/h (6.9 mph)	
2 Speed, High, Optional	17.9 km/h (11.1 mph)	
Axles	Induction-hardened, 1-piece forged axle shafts with maintenance-free oil-bath lubrication of inner and outer axle bearings	
Maximum Axle Torque	6771 Nm (4,994 lb.-ft.)	
Tractive Effort	3220 kgf (7,491 lbf)	
Final Drive	High-strength, adjustment-free chains	
Brakes	Integral, automatic, spring-applied, hydraulically released, wet-disc park brake	
Hydraulics	320G	324G
Pump Flow		
Standard	78 L/m (21 gpm)	
Total with High-Flow Option	112 L/m (30 gpm)	
System Pressure at Couplers	22 408 kPa (3,250 psi)	
Hydraulic Horsepower Flow (calculated)		
Standard	29 kW (39 hp)	
High Flow	42 kW (56 hp)	
Auxiliary Hydraulics	Connect-under-pressure with flat-faced couplers	
Cylinders	320G / 324G	
Type	John Deere heat-treated, chrome-plated polished cylinder rods, hardened steel (replaceable bushings) pivot pins	
Electrical		
Voltage	12 volt	
Battery Capacity	750 CCA standard / 925 CCA optional	
Alternator Rating	75 amp	
Lights	Halogen: 2 front and 1 rear standard / deluxe LED (4 front and 1 rear) optional	
Operator's Station		
ROPS (ISO 3471) / FOPS (ISO 3449) structure with quick-pivot standard		
Tires/Wheels		
Standard Tire Size	12 x 16.5 12 PR SKS	
Serviceability		
Refill Capacity		
Fuel Tank	79 L (21 gal.)	
Operating Weights	320G	324G
	EPA Final Tier 4/EU Stage IV and EPA Interim Tier 4/EU Stage IIIA	EPA Final Tier 4/EU Stage IV and EPA Interim Tier 4/EU Stage IIIA
Base Machine	3246 kg (7,150 lb.)	3496 kg (7,700 lb.)

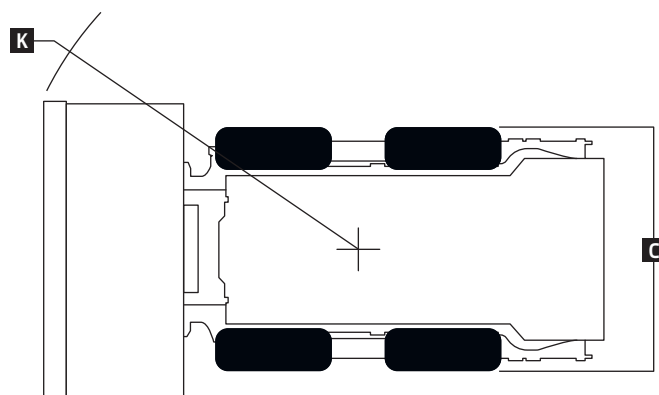
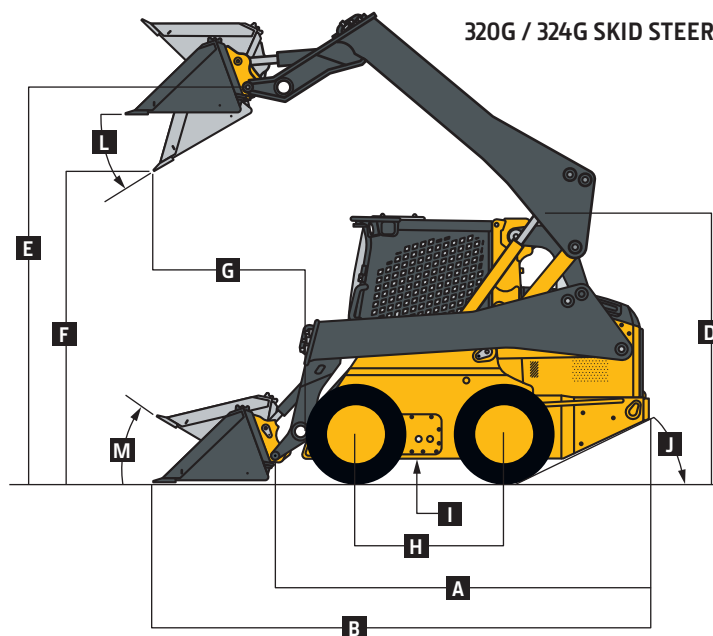
While general information, pictures, and descriptions are provided, some illustrations and text may include product options and accessories NOT AVAILABLE in all regions, and in some countries products and accessories may require modifications or additions to ensure compliance with the local regulations of those countries.

320G / 324G SPECIFICATIONS



Machine Dimensions	320G	324G
A Length without Bucket	2.85 m (112.3 in.) (9 ft. 4 in.)	2.85 m (112.3 in.) (9 ft. 4 in.)
B Length		
With Foundry Bucket	3.46 m (136.3 in.) (11 ft. 4 in.)	3.46 m (136.3 in.) (11 ft. 4 in.)
With Construction Bucket	3.71 m (146.1 in.) (12 ft. 2 in.)	3.71 m (146.1 in.) (12 ft. 2 in.)
C Width without Bucket	1.70 m (67.0 in.) (5 ft. 7 in.)	1.70 m (67.0 in.) (5 ft. 7 in.)
D Height to Top of ROPS	2.06 m (81.1 in.) (6 ft. 9 in.)	2.06 m (81.1 in.) (6 ft. 9 in.)
E Height to Hinge Pin	3.10 m (122.2 in.) (10 ft. 2 in.)	3.20 m (126.0 in.) (10 ft. 6 in.)
F Dump Height		
With Foundry Bucket	2.48 m (97.7 in.) (8 ft. 2 in.)	2.59 m (102.1 in.) (8 ft. 6 in.)
With Construction Bucket	2.31 m (91.0 in.) (7 ft. 7 in.)	2.43 m (95.5 in.) (8 ft. 0 in.)
G Dump Reach		
With Foundry Bucket	0.74 m (29.2 in.)	0.76 m (29.9 in.)
With Construction Bucket	0.93 m (36.4 in.) (3 ft. 0 in.)	0.95 m (37.3 in.) (3 ft. 1 in.)
H Wheelbase	1.12 m (44.2 in.) (3 ft. 8 in.)	1.12 m (44.2 in.) (3 ft. 8 in.)
I Ground Clearance	0.24 m (9.3 in.)	0.24 m (9.3 in.)
J Angle of Departure	28 deg.	28 deg.
K Front Turn Radius with Foundry Bucket	2.02 m (79.6 in.) (6 ft. 8 in.)	2.02 m (79.6 in.) (6 ft. 8 in.)
L Dump Angle (full lift height)	43 deg.	41 deg.
M Bucket Rollback (ground level)	33 deg.	34 deg.

320G / 324G SKID STEERS



Loader Performance	320G	324G
	<i>EPA Final Tier 4/EU Stage IV and EPA Interim Tier 4/EU Stage IIIA</i>	<i>EPA Final Tier 4/EU Stage IV and EPA Interim Tier 4/EU Stage IIIA</i>
Tipping Load	1989 kg (4,380 lb.)	2443 kg (5,380 lb.)
SAE Rated Operating Capacity	994 kg (2,190 lb.)	1221 kg (2,690 lb.)
With Counterweight	1067 kg (2,350 lb.)	1294 kg (2,850 lb.)
Boom Breakout Force		
With Foundry Bucket	1692 kg (3,725 lb.)	2384 kg (5,250 lb.)
With Construction Bucket	1589 kg (3,500 lb.)	2157 kg (4,750 lb.)
Bucket Breakout Force		
With Foundry Bucket	2724 kg (6,000 lb.)	3973 kg (8,750 lb.)
With Construction Bucket	1905 kg (4,200 lb.)	2724 kg (6,000 lb.)

While general information, pictures, and descriptions are provided, some illustrations and text may include product options and accessories NOT AVAILABLE in all regions, and in some countries products and accessories may require modifications or additions to ensure compliance with the local regulations of those countries.



330G / 332G SPECIFICATIONS

Engine	330G		332G	
Manufacturer and Model	Yanmar 4TNV94FHT	Yanmar 4TNV94CHT	Yanmar 4TNV94FHT	Yanmar 4TNV94CHT
Non-Road Emission Standard	EPA Final Tier 4/ EU Stage IV	EPA Interim Tier 4/ EU Stage IIIB	EPA Final Tier 4/ EU Stage IV	EPA Interim Tier 4/ EU Stage IIIB
Cylinders	4	4	4	4
Gross Rated Power (ISO 14396)	68.0 kW (91.2 hp) at 2,500 rpm		74.6 kW (100 hp) at 2,500 rpm	
Net Peak Power (SAE J1349 / ISO 9249)	66.0 kW (88.5 hp) at 2,500 rpm		72.0 kW (96.6 hp) at 2,500 rpm	
Peak Torque	382 Nm (281.8 ft.-lb.) at 1,700 rpm		395 Nm (291.3 ft.-lb.) at 1,700 rpm	
Displacement	3.1 L (186.3 cu. in.)	3.1 L (186.3 cu. in.)	3.1 L (186.3 cu. in.)	3.1 L (186.3 cu. in.)
Rated Engine Speed	2,500 rpm	2,500 rpm	2,500 rpm	2,500 rpm
Torque Rise	47% at 1,700 rpm	47% at 1,700 rpm	39% at 1,700 rpm	39% at 1,700 rpm
Aspiration	Turbocharged, intercooled	Turbocharged, intercooled	Turbocharged, intercooled	Turbocharged, intercooled
Air Cleaner	Dry dual element	Dry dual element	Dry dual element	Dry dual element
Cooling	330G / 332G			
Fan Type	Variable-speed hydraulic drive standard / reversing fan drive optional			
Powertrain	330G		332G	
Type	Electrohydraulic (EH); 4 – 100 heavy-duty (HD) continuous-loop chain			
Travel Speeds				
Low	11.3 km/h (7 mph)		11.3 km/h (7 mph)	
High	19.3 km/h (12 mph)		19.3 km/h (12 mph)	
Axles	Induction-hardened, 1-piece forged axle shafts with maintenance-free oil-bath lubrication of inner and outer axle bearings			
Maximum Axle Torque	8480 Nm (6,235 lb.-ft.)		9289 Nm (6,830 lb.-ft.)	
Tractive Effort	3905 kgf (8,610 lbf)		4218 kgf (9,300 lbf)	
Final Drive	High-strength, adjustment-free chains		High-strength, adjustment-free chains	
Brakes	Integral, automatic, spring-applied, hydraulically released, wet-disc park brake			
Hydraulics				
Pump Flow				
Standard	80 L/m (23.5 gpm)		95 L/m (25.0 gpm)	
Total with High-Flow Option	138 L/m (36.5 gpm)		156 L/m (41.1 gpm)	
System Pressure at Couplers	23 787 kPa (3,450 psi)		23 787 kPa (3,450 psi)	
Hydraulic Horsepower Flow (calculated)				
Standard	35 kW (47 hp)		38 kW (50 hp)	
High Flow	55 kW (74 hp)		62 kW (83 hp)	
Auxiliary Hydraulics	Connect-under-pressure with flat-faced couplers		Connect-under-pressure with flat-faced couplers	
Cylinders	330G / 332G			
Type	John Deere heat-treated, chrome-plated polished cylinder rods, hardened steel (replaceable bushings) pivot pins			
Electrical				
Voltage	12 volt			
Battery Capacity	925 CCA			
Alternator Rating	90 amp			
Lights	Halogen: 2 front and 1 rear standard / deluxe LED (4 front and 1 rear) optional			
Operator's Station				
ROPS (ISO 3471) / FOPS (ISO 3449) structure with quick-pivot standard				
Tires/Wheels	330G		332G	
Standard Tire Size	14 x 17.5 12 PR Extra Wall		14 x 17.5 14 PR Hauler	
Serviceability	330G / 332G			
Refill Capacity				
Fuel Tank	96.5 L (25.5 gal.)			
Operating Weights	330G		332G	
	EPA Final Tier 4/ EU Stage IV	EPA Interim Tier 4/ EU Stage IIIB	EPA Final Tier 4/ EU Stage IV	EPA Interim Tier 4/ EU Stage IIIB
Base Machine	4495 kg (9,900 lb.)	4449 kg (9,800 lb.)	4540 kg (10,000 lb.)	4495 kg (9,900 lb.)

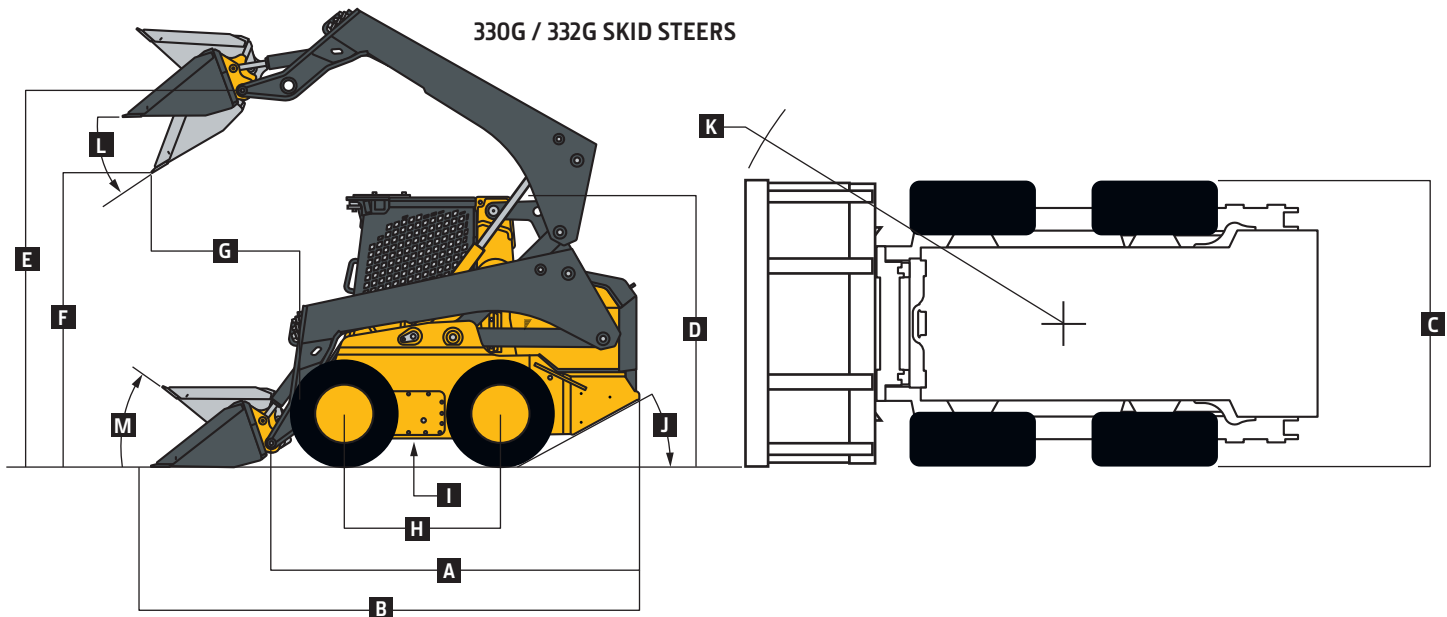
While general information, pictures, and descriptions are provided, some illustrations and text may include product options and accessories NOT AVAILABLE in all regions, and in some countries products and accessories may require modifications or additions to ensure compliance with the local regulations of those countries.

330G / 332G SPECIFICATIONS



Machine Dimensions	330G	332G
A Length without Bucket	3.10 m (122.0 in.) (10 ft. 2 in.)	3.10 m (122.0 in.) (10 ft. 2 in.)
B Length		
With Foundry Bucket	3.71 m (146.0 in.) (12 ft. 2 in.)	3.71 m (146.0 in.) (12 ft. 2 in.)
With Heavy-Duty Construction Bucket	3.96 m (155.9 in.) (13 ft. 0 in.)	3.96 m (155.9 in.) (13 ft. 0 in.)
C Width without Bucket	1.98 m (78.0 in.) (6 ft. 6 in.)	1.99 m (78.4 in.) (6 ft. 6 in.)
D Height to Top of ROPS	2.19 m (86.3 in.) (7 ft. 2 in.)	2.19 m (86.3 in.) (7 ft. 2 in.)
E Height to Hinge Pin	3.35 m (132.0 in.) (11 ft. 0 in.)	3.35 m (132.0 in.) (11 ft. 0 in.)
F Dump Height		
With Foundry Bucket	2.69 m (106.1 in.) (8 ft. 10 in.)	2.69 m (106.1 in.) (8 ft. 10 in.)
With Heavy-Duty Construction Bucket	2.50 m (98.6 in.) (8 ft. 3 in.)	2.50 m (98.6 in.) (8 ft. 3 in.)
G Dump Reach		
With Foundry Bucket	0.71 m (28.0 in.)	0.71 m (28.0 in.)
With Construction Bucket (no edge)	0.88 m (34.6 in.)	0.88 m (34.6 in.)
H Wheelbase	1.27 m (49.9 in.) (4 ft. 2 in.)	1.27 m (49.9 in.) (4 ft. 2 in.)
I Ground Clearance	0.25 m (9.7 in.)	0.25 m (9.7 in.)
J Angle of Departure	29 deg.	29 deg.
K Front Turn Radius with Foundry Bucket	2.18 m (85.7 in.) (7 ft. 2 in.)	2.18 m (85.7 in.) (7 ft. 2 in.)
L Dump Angle (full lift height)	48 deg.	48 deg.
M Bucket Rollback (ground level)	35 deg.	35 deg.

330G / 332G SKID STEERS



Loader Performance	330G	332G
	EPA Final Tier 4/EU Stage IV and EPA Interim Tier 4/EU Stage IIIB	EPA Final Tier 4/ EU Stage IV EPA Interim Tier 4 / EU Stage IIIB
Tipping Load	2724 kg (6,000 lb.)	3269 kg (7,200 lb.) 3269 kg (7,200 lb.)
SAE Rated Operating Capacity	1362 kg (3,000 lb.)	1634 kg (3,600 lb.) 1634 kg (3,600 lb.)
With Optional Set of Counterweights	1430 kg (3,150 lb.)	1703 kg (3,750 lb.) 1703 kg (3,750 lb.)
Boom Breakout Force		
With Foundry Bucket	3175 kg (7,000 lb.)	3865 kg (8,520 lb.) 3746 kg (8,250 lb.)
With Heavy-Duty Construction Bucket	2724 kg (6,000 lb.)	3519 kg (7,750 lb.) 3519 kg (7,750 lb.)
Bucket Breakout Force		
With Foundry Bucket	4676 kg (10,300 lb.)	6307 kg (13,904 lb.) 6243 kg (13,750 lb.)
With Heavy-Duty Construction Bucket	3450 kg (7,600 lb.)	4200 kg (9,250 lb.) 4200 kg (9,250 lb.)

While general information, pictures, and descriptions are provided, some illustrations and text may include product options and accessories NOT AVAILABLE in all regions, and in some countries products and accessories may require modifications or additions to ensure compliance with the local regulations of those countries.

Additional equipment

Key: ● Standard ▲ Optional or special

See your John Deere dealer for further information.

320G	324G	330G	332G	Engine
●	●	●	●	Meets EPA Final Tier 4/EU Stage IV emissions
▲	▲			Meets EPA Interim Tier 4/EU Stage IIIA emissions
		▲	▲	Meets EPA Interim Tier 4/EU Stage IIIB emissions
●				Yanmar 4TNV98C
▲	●			Yanmar 4TNV98CT
▲	▲			Yanmar 4TNV98T
		●	●	Yanmar 4TNV94FHT
		▲	▲	Yanmar 4TNV94CHT
●	●	●	●	Auto-idle
●	●	●	●	Automatic fan tensioner
●	●	●	●	Automatic preheat
●	●	●	●	Electronic injection system
▲	▲	▲	▲	Engine air precleaner kit
●	●			Fuel tank, 79 L (21 gal.)
		●	●	Fuel tank, 96.5 L (25.5 gal.)
●	●	●	●	John Deere COOL-GARD™ II Extended-Life Engine Coolant
●	●	●	●	John Deere Plus-50™ 10w30 initial engine oil fill ⁶
●				4-cylinder 51.7 kW (69 gross hp)/ 49.4 kW (66 net hp), 3.3-L (203 cu. in.) displacement
	●			4-cylinder 55.0 kW (74 gross hp)/ 52.5 kW (70 net hp), 3.3-L (203 cu. in.) displacement
		●		4-cylinder 68.0 kW (91.2 gross hp)/ 66.0 kW (88.5 net hp), 3.1-L (186.3 cu. in.) displacement
		●		4-cylinder 74.6 kW (100 gross hp)/ 72.0 kW (96.6 net hp), 3.1-L (186.3 cu. in.) displacement
●	●	●	●	5-micron primary fuel filter and water separator
▲	▲	▲	▲	Cold-weather starting package
Cooling System				
●	●	●	●	Coolant surge tank
●	●	●	●	Variable-speed hydraulically driven fan cooling system
▲	▲	▲	▲	Reversing fan drive
Powertrain				
●	●	●	●	High-strength adjustment-free final-drive chains
●	●	●	●	Automatic spring-applied hydraulically released wet-disc park brake
●	●	●	●	Wet-disc brakes
●	●			Transmission, single speed
▲	▲	●	●	Transmission, 2 speed
Hydraulic System				
●	●	●	●	John Deere hydraulic cylinders with cushioned boom cylinders
●	●	●	●	John Deere heat-treated, chrome-plated cylinder rods with replaceable bushings
●	●	●	●	Connect-under-pressure auxiliary couplers
●	●	●	●	Quick-check hydraulic fluid-level sight glass
●	●	●	●	1,000-hour, 5-micron hydraulic filter
▲	▲	▲	▲	High-flow hydraulics
●	●	●	●	Axial-piston hydrostatic pump

320G	324G	330G	332G	Electrical
●	●	●	●	Automatic engine/hydraulic shutdown protection system
●	●	●	●	Auxiliary hydraulics operator-presence system
●	●	●	●	Courtesy lighting
●	●	●	●	Deluxe instrumentation EMU with: Operator-selectable monitoring – Hour meter, engine rpm, battery voltage, diagnostics, EMU configuration, engine coolant temperature, hydraulic oil temperature / LED warning indicators – Glow plug, seat switch, seat belt, door open, auxiliary hydraulics, park brake engaged, 2-speed engaged, stop, low engine oil pressure, engine coolant over-temperature, battery not charging, air filter restriction, and hydraulic filter restriction
▲	▲	▲	▲	Deluxe LED lighting package with additional cab-integrated side lights (2)
●	●	●	●	Front and rear halogen work lights
●	●	●	●	Triple-interlock operator-presence control system
●	●	●	●	Backup alarm
●	●			Battery, 750 CCA
▲	▲	●	●	Battery, 925 CCA
▲	▲	▲	▲	Hazard warning lights
▲	▲	▲	▲	Strobe light, amber
●	●	●	●	Horn
Operator's Station				
●	●	●	●	Deluxe cab headliner
▲	▲	●	●	Electrohydraulic (EH) ISO-pattern joystick controls
▲	▲	▲	▲	ISO-H switchable joystick controls and EH joystick performance package*
●	●			Mechanical foot controls
		▲	▲	EH 4-way switchable controls include EH foot control, ISO joystick control, H-pattern joystick control, and ISO and foot controls
		▲	▲	ISO controls with programmable detents and EH boom performance package;† also includes EH joystick performance package*
		▲	▲	Onboard grade indication: Grade-control option delivers onboard readout within LCD monitor that provides slope of blade (cross-slope direction) and mainfall (fore/aft direction) within ±0.5-percent accuracy
▲	▲	▲	▲	Keyless-start sealed-switch module with integrated anti-theft system and operator memory preference settings
●	●	●	●	Electronic push-button auxiliary controls
●	●	●	●	Pull-down adjustable lap bar
●	●	●	●	Quick-pivot ROPS
●	●	●	●	Rear window
●	●	●	●	Removable top window
▲	▲	▲	▲	Sliding/locking/removable glass side windows

320G	324G	330G	332G	Operator's Station (continued)
●	●	●	●	ROPS/FOPS operator structure
▲	▲	▲	▲	Glass cab enclosure
●	●	●	●	Seat belt, 51 mm (2 in.), retractable
▲	▲	▲	▲	Shoulder belt, 51 mm (2 in.) or 76 mm (3 in.)
▲	▲	▲	▲	Severe-duty cab door and wiper system
●	●	●	●	Water-shedding deluxe vinyl suspension seat
▲	▲	▲	▲	Deluxe vinyl suspension seat
▲	▲	▲	▲	Air-ride cloth, heated seat
▲	▲	▲	▲	Air-ride vinyl seat
●	●	●	●	12-volt power port / Dome light / Cargo storage / Beverage holder
▲	▲	▲	▲	Air conditioning with heater/defroster
▲	▲	▲	▲	AM/FM radio with auxiliary input and Bluetooth® for audio streaming
▲	▲	▲	▲	Floor mat with left footrest
●	●	●	●	Rearview mirror
▲	▲	▲	▲	Rearview camera
Loader				
●	●	●	●	In-cab boom lockout to secure loader before exiting seat
●	●	●	●	Patented John Deere Quik-Tatch™ (no grease required)
▲	▲	▲	▲	Power Quik-Tatch
●	●	●	●	Patented John Deere vertical-lift boom
▲	▲	▲	▲	Hydraulic self-leveling on/off and ride control
Other				
●	●	●	●	Convenient front and rear tie-downs
●	●	●	●	Environmental drains for all fluid reservoirs
		▲		12 x 16.5 8 PR SKS Extra Wall Heavy Duty
		▲		12 x 16.5 10 PR Extra Wall
●	●			12 x 16.5 12 PR SKS
		●	▲	14 x 17.5 12 PR Extra Wall
		▲	●	14 x 17.5 14 PR Hauler
▲	▲	▲	▲	Chrome exhaust stack
▲	▲	▲	▲	Engine oil/hydraulic fluid-sampling kit
▲	▲	▲	▲	Forestry protection packages
▲	▲	▲	▲	Heavy-duty rear grille
▲	▲	▲	▲	Rear counterweights (available in sets of 1, 2, or 3), 78 kg (172 lb.) (each set)
▲	▲	▲	▲	Single-point lift kit
▲	▲	▲	▲	SMV sign kit
▲	▲	▲	▲	Spare tire and wheel
▲	▲	▲	▲	Tire options: SKS Extra-Wall, Galaxy Beefy Baby III, Galaxy Hulk, and Brawler Solid-Flex
▲	▲	▲	▲	JDLink™ wireless communication system (available in specific countries; see your dealer for details)

⁶500-hour engine oil-change intervals when John Deere Plus-50 oil and John Deere oil filter are used.

*EH joystick performance package features switchable accelerator/decelerator, selectable propel speeds, creep control, boom- and bucket-speed settings, and 12-volt 3- and 14-pin attachment-control harness with dash-mounted 4th-function rocker switch.

†EH boom performance package features include EH bucket self-level up and down, return to dig, return to carry, and boom-height kick-out.

While general information, pictures, and descriptions are provided, some illustrations and text may include product options and accessories NOT AVAILABLE in all regions, and in some countries products and accessories may require modifications or additions to ensure compliance with the local regulations of those countries.

Net engine power is with standard equipment including air cleaner, exhaust system, alternator, and cooling fan, at standard conditions per SAE J1349 and DIN 6270B, using No. 2-D fuel at 35 API gravity. Gross power is without cooling fan. Specifications and design subject to change without notice. Wherever applicable, specifications are in accordance with SAE standards. Except where otherwise noted, these specifications are based on units with standard equipment, full fuel tanks, and 79-kg (175-lb.) operator.

