

Fertiliser Spreaders 10-24 m

MDS 8.2 / 14.2 / 18.2 / 20.2



www.kuhn.com



be strong, be **KUHN**



KUHN

MDS 20.2

MDS

KUHN



MDS 8.2 14.2 18.2 20.2

MORE CAPACITY, MORE FLEXIBILITY, MORE SIMPLICITY



There are so many possibilities in terms of size, capacity, outlet opening and closing, and even regulation. MDS 8.2 and 14.2 models have been specially designed for vineyards and orchards, where they are able to weave smoothly in and out of row plantations. MDS 18.2 and 20.2 models have a wide range of extensions that give them more autonomy and enable them to adapt to different tractor types.

NARROW MACHINES ARE EASIER TO OPERATE BETWEEN ROWS

The overall width of the MDS 8.2 fertiliser spreader is 1.08 m. The hopper has “broken” angles, which contribute to being able to move from row to row without damaging the crops.

SPREADING DISCS OR LIMITER

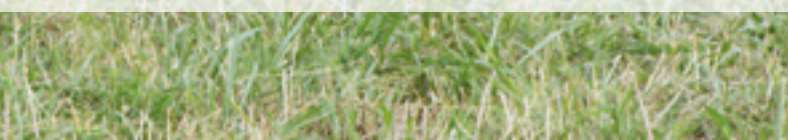
It takes just a few seconds to adjust the spreading vanes to the product being used and to the working width required. The spreading limiter on 2 rows directs the fertiliser to the base of the plantation.

VISIBLE FROM THE DRIVER’S SEAT

The 2 graduated scales are ideally positioned at the front of the hopper to give the driver perfect visibility of settings from the tractor seat. Outlet controls are available in single or double-acting hydraulic versions, electric or electronic with the QUANTRON A control box.

KUHN’s MDS range of fertiliser spreaders in brief:

	MDS 8.2	MDS 14.2	MDS 18.2	MDS 20.2
Working width (m)	10 to 24 (depending on discs and products)			
Min / max capacity (l)	500 / 800	800 / 1,400	700 / 1,800	900 / 2,000
Maximum payload (kg)	800	1,400	1,800	2,000
Hopper width (m)	1.08	1.40	1.90	



PRECISE METERING AND OPTIMAL SPREADING



MDS DISC: THE BEST PRECISION!

MDS (Multi-Disc-System) spreading discs are designed for so-called normal or late top spreading on high crops. Easy to use, they ensure high precision for granulated fertilisers, organic fertilisers (pellets), seeds for plant cover or slug pellets. They can be adjusted according to the type of fertiliser, working width, length, angle and orientation of the spreading vanes, which can be quickly set according to the recommendations in the setting tables. For easy emptying and cleaning, the discs can be rapidly removed without tools. This enables precise spreading patterns with high precision with all types of fertiliser (including organic fertiliser), fine seeds and slug pellets.

M1 discs are supplied as standard for working widths between 10 and 18 m. The use of M2 discs allows a width of 18 to 24 m depending on the products to be spread, without altering the quality of spreading while optimising the yield at the edge of the fields.



SPREADING UP TO 24 METER



SINGLE TANK: COUNTLESS BENEFITS

The MDS .2 single hopper device features a compact design with a perfect gravity centre. This device allows using a small tractor without disrupt working quality, it helps preserve the soil structure and increase your stability when travelling on roads.

READY, STEADY, SPREAD

Slopes are no longer an issue, thanks to the single hopper, there is always sufficient fertiliser above the outlet opening. This ensures that fertiliser is applied evenly and as required on any ground. In addition, you benefit from a complete emptying of the hopper whatever the working conditions.



A slowly rotating agitator (only 180 rpm) protects the granules and provides a regular flow of fertiliser to the spreading discs. In order to increase spreading precision special agitators are available for powdery products such as grass seed or lime.



DFC SCALE: EXACT APPLICATION RATE CONTROL

Nothing could be easier than changing the application rate from one field to another. The direct flow control is opened and closed separately on the left and right side. The easily readable, quantity-proportional DFC scale, unique to KUHN, allows reliable quantity corrections after a calibration test. This system allows you to modify the application rate without any extra equipment. The principle is quite simple: the opening position is modified by the same percentage as the application rate. This means, for example, that you increase the opening by 10% for a 10% higher application rate.

EASY ACCESS FOR SETTINGS

The 2 graduated sectors are ideally placed at the front of the hopper for perfect visibility of the adjustments from the cab with the yellow pointer. That means it is not necessary to get out of the tractor in order to check settings.



MDS: THE BEST BETWEEN ROWS AND FIELD



THE SPECIALIST FOR SPREADING BETWEEN ROWS

Due to the slim design of MDS 8.2 with 1.08 m width or MDS 14.2 with 1.40 m width, these machines are designed for use in special crops with narrow row spacing. This compact size makes them particularly suitable for vineyard and orchard applications. The hopper has «broken» angles which contribute to being able to move from row to row without damaging the crops.

TWO OR SEVEN ROW SPREADING

For spreading in orchards and vineyards, choose the 2 row spreading device in stainless steel. Valuable fertilizer is saved as nutrient are delivered in the root area of row crops and no granulate falls in the machine track. This specific device can be easily adjusted to row distances between 2 and 5 m without tools.

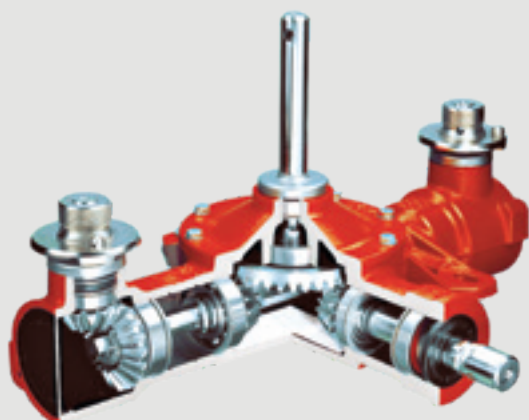


As option, you can equip your MDS .2 spreader with the spreading device specially designed for row crops such as maize, strawberries, vegetables, etc. It allows supplying precisely up to seven rows with the desired fertiliser at the same time. This device can be adjusted to different metering quantities and row spacing in just a few simple steps. On one hand, this saves fertiliser and on the other hand, it spares the environment. It's possible to combine it with MDS 14.2, 18.2 and 20.2 models.

READY FOR ORGANIC FARMING

All MDS .2 are suitable for spreading in organic farming. Benefit from spreading charts for specific approved organic fertiliser such as pellets or granulates. Also enjoy the easy maintenance process and hopper cleaning. In addition to that, the high proportion of stainless materials and the elaborate powder coating preserve the value and service life of MDS models for many years.

SYMBOL OF ROBUSTNESS AND DURABILITY



DESIGNED FOR A 10-YEAR OIL CHANGE INTERVAL!

Designed for 10-year oil change intervals, the reinforced oil-bath gearbox drives spreading discs and agitators. Even in tough conditions, the sturdy heart of the MDS .2 stands out by its long life service. As well as the bottom of the hopper, all drive shafts are made of treated stainless steel.

DESIGNED TO LAST

Shielding made of composite materials covers the spreading discs and efficiently protects the painted areas of the frame and the hopper. All painted surfaces are shot blasted; nanotech surface treatment is applied and then powder coated with ultra-high-quality powder.



MORE CAPACITY FOR MORE AUTONOMY

2,000 L CAPACITY FOR THE NEW MDS 20.2

The MDS 18.2 and 20.2 models are intended for diversified farms and have maximum capacities of 1,800 and 2,000 liter, respectively. These high loads, coupled with the flexible hopper extension system, ensure ultimate performance and reduce road travel for filling operations.



CHOOSE YOUR EQUIPMENT

Customize your MDS .2 spreader with a large range of equipment. Also optional are hopper covers to protect the product from weather in all conditions. For increased safety during road travel, it is also possible to equip your spreader with complete lighting and signalling equipment.

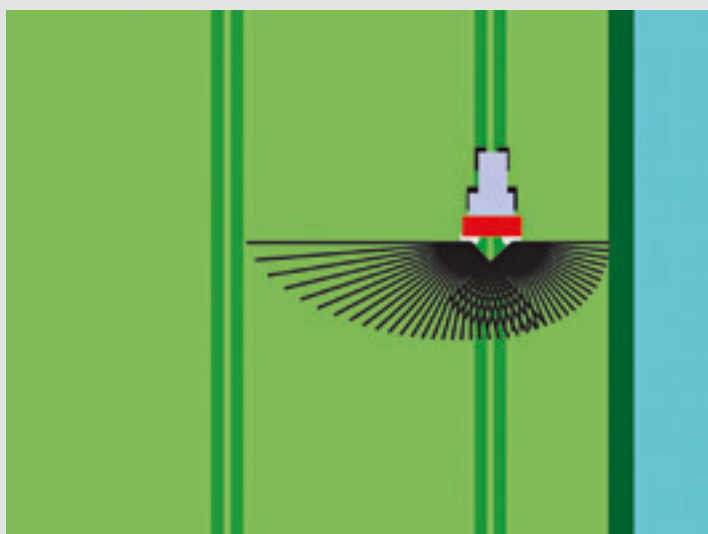
The environment being at the heart of our concerns, we offer several devices allowing you to manage your borders as well as possible. Whether you work in vineyards, orchards, row crops or field crops, you will always find a border device that suits your needs.

BEST BORDER MANAGEMENT

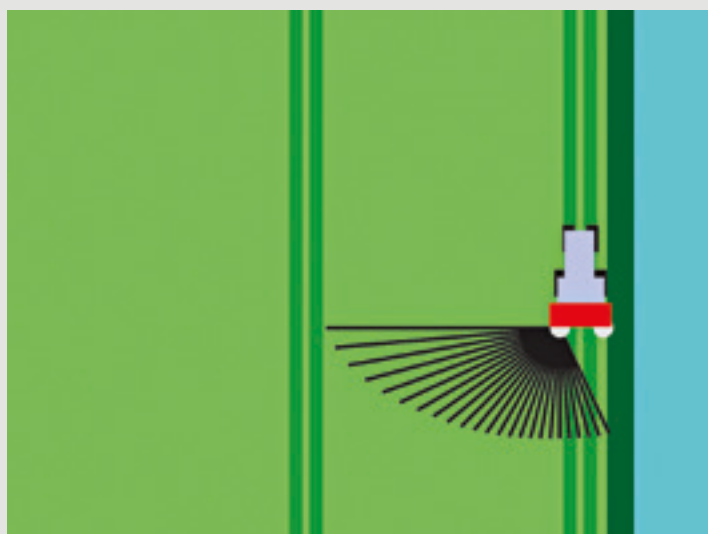
For perfect border management benefit from the best technologies.

To ensure a perfect border spreading the spreading vanes can be easily adjusted.

Without leaving the tractor, TELIMAT hydraulic device allows controlling fertiliser spreading along the borders. TELIMAT stands for precise and comfortable border and edge spreading. It ensures a perfect mineral feed to your plantations and crops in order to optimize fertiliser inputs. If the tramline is located directly on the edge, the GSE manual device can be used for one-sided spreading.



TELIMAT



GSE



TELIMAT

TELIMAT is a hydraulic, remote-controlled boundary and edge spreading device. This hydraulically controlled deflector is easily adjustable from the tractor cab, guiding the trajectory of the fertiliser from the disc. This option provides maximum simplicity for the operator.



GSE

GSE is a manually operated boundary and edge spreading device that enables one-sided (to the left or right) border spreading directly from the field boundary. This equipment can be remote controlled on request. The distance to the border can be adjusted between 0 and 3 m.

OPENING AND CLOSING THE METERING OUTLETS

When it comes to outlet control, choose the option that meets your needs. The outlet control is available: in single or double-acting hydraulic version, electric or electronic with regulation by the QUANTRON A.

CHOOSE YOUR HYDRAULIC OUTLET CONTROL DEVICE

In the K and D versions, the individual slides are operated in a single-acting or dual-acting manner by the tractor control unit via hydraulic cylinders. With a double acting device, even if your hydraulic power has internal leaks, the valves are not likely to open. The simple acting device benefits from a valve allows isolating the circuit of each hydraulic cylinder.



E-CLICK: INDIVIDUAL ELECTRIC OUTLET CONTROL

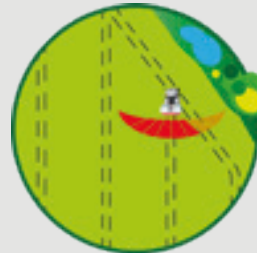
For enhanced control, choose this electric metering outlet control option. One actuator for each outlet ensures reliability and precision, all controlled through the simple E-Click switch box. Just like the hydraulic version, convenient indicators for monitoring the outlets are visible from the operator's seat.

QUANTRON A: YOUR SPREADING ASSISTANCE

QUANTRON A terminals electronically adjust the metering outlets to maintain a consistent flow rate relative to your ground speed. During spreading you are able to:

- Modify the application rate
- Simultaneously close either side with a simple button
- Quickly empty any remaining product from the hopper at the end of the day
- Perfect compatibilities with SpreadSet Apps
- Varispread 8 as standard: section control with 8 sections (4 on each side) manual or by GPS

The terminal also features a work counter for 200 fields and integrated spreading charts.



VARISPREAD 8:
Section Control with 8 sections



	MDS 8.2	MDS 14.2	MDS 18.2	MDS 20.2
Working width (m)	10-24 (depending on disc selection and material)			
Basic capacity	500 L basic ; 800 L with optional extension	800 L basic ; 1,400 L with optional extension	700 L basic ; 1,800 L with optional extension	900 L basic ; 2,000 L with optional extension
Maximum hopper load (kg)	800	1,400	1,800	2,000
Filling height (cm)	92	104	93	101
Hopper width (cm)	108	140	190	190
Loading width (cm)	98	130	178	178
Flow control	Direct Flow Control (DFC) system			
Agitator	180 rpm			
Application rate	Up to 250 kg/min			
Half width shut-off	◆			
Protection sieve	◆			
Spreading discs as standard	M1 discs for spreading from 10-18m			
Hitch	Cat. 2 (not quick hitch compatible)			
Gearbox	540 rpm			
Empty machine net weight, approx. (kg)	200	220	250	

◆ standard ◇ option - not available

Optional equipment: hopper extension - cover - TELIMAT - Fertiliser attachment on 2 rows for orchards / vineyards - 7-tube fertiliser attachment chute - rear lighting kit - lateral signalling - flow control kit - long PTO for shaft for hitching on LEVSAK - distribution control kit - specific agitator for grass seed - specific agitator for powdered fertiliser

CUSTOMIZE YOUR SPREADER WITH CLIP FIX EXTENSIONS

Extensions with 1.08 m width MDS 8.2

M 30 (300 L)



Extensions with 1.40 m width MDS 14.2

M 21 (200 L)



M 41 (400 L)



Extensions with 1.90 m width MDS 18.2 / 20.2

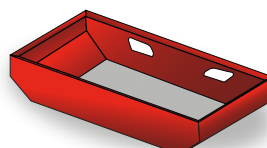


M 430 (400 L)

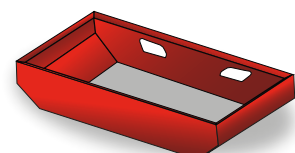


M 630 (600 L)

Extensions with 2.40 m width MDS 18.2 / 20.2



M 800 (800 L)



M 1110 (1,100 L)

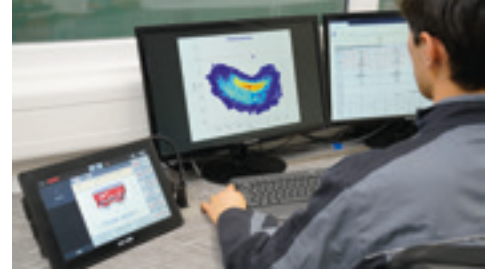
MDS 8.2 14.2 18.2 20.2

EUROPE'S MOST MODERN TEST HALL

THE BEST TESTS FOR MORE PRECISION

- 95 years of fertilisation experience
- 1235 m² for working widths up to 75 m
- 88 collecting trays fully automatic
- A fully air-conditioned room for controlled environment
- 3000 spreading tests carried out each year

To ensure the correct settings for each of our spreaders for more than 3000 different fertilisers.



MORE PRODUCTS TO MEET YOUR NEEDS




With over 700 models, we have the most complete implement range in the industry. Whether you have a small or large operation, we have a broad range of models and options to help fit your diverse needs.

For more information about your nearest KUHN dealer, visit our website www.kuhn.com



Visit us on our YouTube channels.

 www.kuhn.com	Your KUHN dealer
--	------------------

KUHN SAS

4 Impasse des Fabriques - BP 50060
F-67706 Saverne CEDEX - FRANCE

KUHN NORTH AMERICA, INC.

1501 West Seventh Avenue - Brodhead,
WI 53520 - USA

KUHN FARM MACHINERY PTY. LTD

313-325 Foleys Road - Deer Park, VIC, 3023 - AUSTRALIA

KUHN FARM MACHINERY (U.K.) LTD

Stafford Park 7 - GB TELFORD/ SHROPS TF3 3BQ

Information given in this document is only for information purposes and is non-contractual. Our machines are in compliance with regulations in force in the country of delivery. In our literature, and for improved illustration of certain details, some safety devices may not be in operating position. When operating these machines, these devices **must** be in position in accordance with the requirements indicated in the operator's manuals and pre-delivery instructions. RESPECT THE ROAD REGULATIONS IN FORCE AS WELL AS the tractor gross vehicle weight rating, its lift capacity and maximum load per axle and tyres. The tractor front AXLE load must always comply with the regulations of the country of delivery (In Europe, it must reach minimum 20 % of the tractor net weight). We reserve the right to change any designs, specifications or materials listed without further notice. Machines and equipment in this document can be covered by at least one patent and/or registered design. Trademarks cited in this document may be registered in one or several countries.

Also find KUHN on

