

944 X



JOHN DEERE

Hybrid Wheel Loader



EⁱDrive



944 X-TIER HYBRID WHEEL LOADER

BIG THINKING. BIG OPPORTUNITY.

At John Deere, we've been building some of the world's best wheel loaders for more than 50 years, so we know what it takes to deliver on big!

And having been inspired by some of the brightest minds in the business (our customers), we've designed a unique alternative for quarry and aggregate applications that is delivering some big opportunities. Featuring our industry-exclusive E-Drive system designed to lower your total cost of ownership and maximize productivity, the 944 X-Tier Hybrid Wheel Loader is our largest wheel loader and combines the exceptional results you've come to expect from John Deere production-class equipment.

Big in performance. Big in reliability. Big in sustainability.

E-Drive innovation

Innovative E-Drive system consists of a John Deere PowerTech™ engine, gearbox, AC generators and motors, solid-state power electronics, and water-cooled brake resistors that deliver reliable, long-term performance. Four independent drive motors deliver increased traction and enhanced power to the ground, and are designed to last over 30,000 hours with periodic rotation during MidLife or ReLife events. Excess energy is passively consumed through the brake resistors that help maintain reversal performance and engine overspeed when the machine coasts downhill.

Designed for cost savings

Since the 944 X-Tier does not contain major components like axles and a transmission, those components will not need to be rebuilt or replaced like on a conventional-drive loader. A MidLife event for this loader within the 18,000–20,000-hour range costs approximately 40–50-percent less than rebuilding a traditional-drive machine.

Overachiever

Strong pushing power and quick ramp-climbing ability make the 944 X-Tier an excellent choice for loading trucks and feeding crushers in quarry operations and other production facilities.

Smooth and responsive

Flow-sharing hydraulic system boasts the fastest cycle times and the quickest boom-raise time in the 944 X-Tier's size class, speeding short-pattern truck loading. Each boom and bucket function has its own hydraulic pump, for quick, smooth operation and accelerated truck loading.

Viable sustainability

Designed to burn significantly less fuel while moving more material, the 944 X-Tier is the most fuel-efficient machine in its size class. Its E-Drive system recaptures energy when the operator lays off the accelerator pedal, changes machine direction, or drives it downhill. The recovered energy is sent to the power electronics, which in turn can use this energy to drive the generators to assist the hydraulic pumps, reducing the load on the engine and allowing the controller to send less fuel to the engine. The E-Drive system also helps prevent excessive tire spin, with the machine needing four fewer tire changes over its life. Additionally, lower oil and fluid volumes are required for recommended preventative maintenance, reducing CO₂ emissions over the life of the 944 X-Tier compared to traditional-drive loaders.

Field proven

John Deere E-Drive technology in our 944 and 644 Wheel Loaders has collectively logged over five million field hours — a testament to the durability and performance of our transmission components and systems.

FIND YOUR FIT

X

LEADING EDGE

Premium edge with innovative technology

P

EXCEPTIONAL PERFORMANCE

Advanced features and performance

G

RUGGED AND RELIABLE

Proven capabilities and value

Control as you go

Traction control automatically limits torque to any wheel when slippage occurs, boosting machine traction in poor underfoot conditions and extending tire life. **Rimpull control** limits torque on the wheels in slick working conditions, preventing tire spin and slicing. **Coast control** functions like dynamic braking in a hydrostatic transmission, slowing the loader without touching a pedal and helping reduce service-brake component wear.

Keep it down

At only 107 dBA, noise is much less noticeable to bystanders than with other loaders, making the 944 X-Tier a sound choice on busy jobsites. For the operator, cab noise is only 71 dBA.

Large and in charge

At 10-inches wider than the next smaller Deere loader, the comfortably spacious cab is the largest in its class. Floor-to-ceiling front glass enables a commanding view to the bucket and tires. Front fender is cut back so the operator can see when slippage occurs.

Light for life

Standard courtesy lighting illuminates entrance/exit in dark environments. Optional premium LED lighting package enhances visibility in low- or no-light conditions. LED lights rarely need to be changed, maximizing wear life.

Protected hydraulic and oil plumbing

Hoses in the articulation area are routed using a unique ribbon system designed to eliminate rubbing and wear in difficult-to-reach areas.

Get things done

All daily service points including fueling are grouped for quick and convenient ground-level access. Filter bank and right-side service center are readily accessible, easing periodic maintenance and repairs.



944 X-TIER HYBRID WHEEL LOADER



+

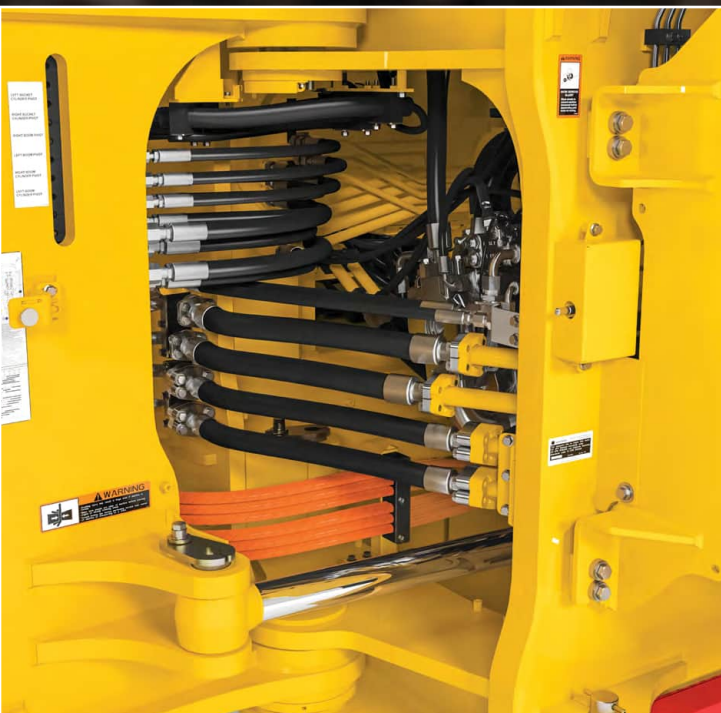


POWERFUL INNOVATIVE

Precision Construction

This suite of construction technology delivers **Productivity Solutions** to help you get more done, more efficiently. In-base JDLink™ connectivity provides machine location, utilization data, and alerts to help you maximize productivity and efficiency. To maximize uptime and lower costs, JDLink also enables **John Deere Connected Support™**. Dealers use Expert Alerts based on data from thousands of connected machines to proactively address conditions that may otherwise likely lead to downtime. Your dealer can also monitor machine health and leverage remote diagnostics and programming capability to further diagnose problems and even update machine software without a time-consuming trip to the jobsite.*

*Availability varies by region. Options not available in every country.



944 X-TIER WHEEL LOADER SPECIFICATIONS

While general information, pictures, and descriptions are provided, some illustrations and text may include product options and accessories NOT AVAILABLE in all regions, and in some countries products and accessories may require modifications or additions to ensure compliance with the local regulations of those countries.

Engine		944 X-TIER STANDARD BOOM / LONG BOOM	
Manufacturer and Model	John Deere PowerTech™ PSS 6135	Fuel System (electronically controlled)	Mechanically actuated electronic unit injectors
Non-Road Emission Standard	EPA Final Tier 4/EU Stage IV	Lubrication	Full-flow spin-on filter and integral cooler
Cylinders	6	Aspiration	Series turbocharged, charge air cooled
Valves per Cylinder	4	Air Cleaner	Under-hood dual-element dry type; restriction indicator in cab monitor for service
Displacement	13.5 L (824 cu. in.)		
Net Peak Power (ISO 9249)	400 kW (536 hp) at 1,600 rpm		
Net Peak Torque (ISO 9249)	2530 Nm (1,866 lb.-ft.) at 1,400 rpm		
Net Torque Rise	23%		
Cooling			
Fan Drive	Hydraulically driven, proportionally controlled, fan aft of coolers		
Electrical			
Electrical System	24 volt with 150-amp alternator		
Batteries (2 – 12 volt)	1,400 CCA (each) and optional cold-weather-battery option (12-volt, 1,400-CCA batteries [4 total])		
Reserve Capacity	440 min. (880 min. with cold-weather-battery option)		
Alternator Rating	150 amp		
Transmission System			
Type	Hybrid-electric direct drive		
Generators (2)	Brushless A/C		
Motor Type	Brushless A/C wheel motors (4 [1 for each wheel])		
Inverters	Solid-state power		
Operator Interface	Joystick-mounted F-N-R; Quick-Shift button on hydraulic boom-control lever		
Shift Modes	Auto mode (1st–D or 2nd–D); Quick-Shift button with 2 selectable modes; kick-down or kick-up/down		
Maximum Travel Speeds (with 35/65R33 tires)	Forward	Reverse	
Range 1	7.0 km/h (4.4 mph)	7.0 km/h (4.4 mph)	
Range 2	12.0 km/h (7.5 mph)	12.0 km/h (7.5 mph)	
Range 3	24.0 km/h (14.9 mph)	24.0 km/h (14.9 mph)	
Range 4	39.0 km/h (24.2 mph)	39.0 km/h (24.2 mph)	
Axles/Brakes			
Final Drives	Heavy-duty outboard-mounted double reduction		
Rear Axle Oscillation, Stop to Stop (with 35/65R33 tires)	24 deg. (12 deg. each direction)		
Brakes (conform to ISO 3450)			
Service	Hydraulically actuated, oil cooled, self-adjusting, multi disc		
Parking	Automatic spring applied, hydraulically released, final-drive integrated, oil cooled, multi disc		
Tires/Wheels (see page 9 for complete tire adjustments)			
	Tread Width	Width Over Tires	
Michelin 35/65R33 XTXL L4 3 Star	2720 mm (107 in.)	3729 mm (146.8 in.)	
Serviceability			
Refill Capacities		Refill Capacities (continued)	
Fuel Tank With Lockable Cap	746 L (197 gal.)	Engine Oil With Vertical Spin-On Filter	44 L (46 qt.)
Diesel Exhaust Fluid (DEF)	55 L (14.5 gal.)	Wheel Motor and Final Drive Oil (each corner)	53 L (56 qt.)
Cooling System		Generator/Pump Drive	34 L (36 qt.)
Engine	128 L (135 qt.)	Hydraulic Reservoir and Filter	378 L (100 gal.)
Power Electronics	13.6 L (14.4 qt.)		
Hydraulic System/Steering			
Pumps	Dual, variable-displacement, axial-piston pump; electronic displacement control with pressure cutoff		
Maximum Rated Flow at 6895 kPa (1,000 psi) and 1,800 rpm	379 L/m (100 gpm) each		
System Relief Pressure	35 000 kPa (5,000 psi)		
Loader Controls	Electrohydraulic (EH) 2-function valve; fingertip controls		
Pump	Variable-displacement, axial-piston pump; load sensing with pressure cutoff		
Maximum Rated Flow at 6895 kPa (1,000 psi) and 1,800 rpm	280 L/m (74 gpm)		
Steering (conforms to ISO 5010)			
Type	Power, fully hydraulic, pilot joystick steering		
Articulation Angle	80-deg. arc (40 deg. each direction)		
Turning Radius (measured to centerline of outside tire)	7.95 m (26 ft. 1 in.)		

944 X-TIER WHEEL LOADER SPECIFICATIONS

944

X

While general information, pictures, and descriptions are provided, some illustrations and text may include product options and accessories NOT AVAILABLE in all regions, and in some countries products and accessories may require modifications or additions to ensure compliance with the local regulations of those countries.

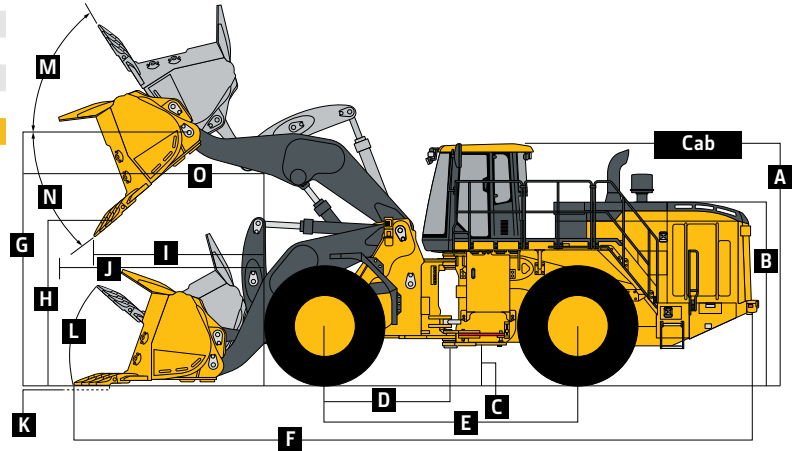
Hydraulic System/Steering (continued)

944 X-TIER STANDARD BOOM / LONG BOOM

Hydraulic Cycle Time

Raise	7.0 sec.
Dump	3.0 sec.
Lower (float down)	3.5 sec.
Total	13.5 sec.

Dimensions and Specifications With Pin-On Bucket



944 X-TIER STANDARD-BOOM AND LONG-BOOM LOADERS WITH PIN-ON BUCKET

Dimensions With Bucket	7.65-m ³ (10.0 cu. yd.) general-purpose pin-on bucket w/ bolt-on cutting (BOC) edge		6.88-m ³ (9.0 cu. yd.) spade-nose rock bucket w/ TK550 adapters and TK550LD penetration		7.65-m ³ (10.0 cu. yd.) spade-nose rock bucket w/ TK550 adapters and TK550LD		6.5-m ³ (8.5 cu. yd.) heavy-duty granite spade-nose rock bucket w/ TK550 adapters, wear liners, top cutting-edge protection, and TK550LDH abrasion teeth kit w/ Max Wear Protection	
	Standard	Long Boom	Standard	Long Boom	Standard	Long Boom	Standard	Long Boom
A Height to Top of Cab	4.20 m (13 ft. 9 in.)	4.20 m (13 ft. 9 in.)	4.20 m (13 ft. 9 in.)	4.20 m (13 ft. 9 in.)	4.20 m (13 ft. 9 in.)	4.20 m (13 ft. 9 in.)	4.20 m (13 ft. 9 in.)	4.20 m (13 ft. 9 in.)
B Hood Height	3.13 m (10 ft. 3.4 in.)	3.13 m (10 ft. 3.4 in.)	3.13 m (10 ft. 3.4 in.)	3.13 m (10 ft. 3.4 in.)	3.13 m (10 ft. 3.4 in.)	3.13 m (10 ft. 3.4 in.)	3.13 m (10 ft. 3.4 in.)	3.13 m (10 ft. 3.4 in.)
C Ground Clearance	582 mm (22.9 in.)	582 mm (22.9 in.)	582 mm (22.9 in.)	582 mm (22.9 in.)	582 mm (22.9 in.)	582 mm (22.9 in.)	582 mm (22.9 in.)	582 mm (22.9 in.)
D Length From Centerline to Front Axle	2.25 m (7 ft. 4.6 in.)	2.25 m (7 ft. 4.6 in.)	2.25 m (7 ft. 4.6 in.)	2.25 m (7 ft. 4.6 in.)	2.25 m (7 ft. 4.6 in.)	2.25 m (7 ft. 4.6 in.)	2.25 m (7 ft. 4.6 in.)	2.25 m (7 ft. 4.6 in.)
E Wheelbase	4.5 m (14 ft. 9.2 in.)	4.5 m (14 ft. 9.2 in.)	4.5 m (14 ft. 9.2 in.)	4.5 m (14 ft. 9.2 in.)	4.5 m (14 ft. 9.2 in.)	4.5 m (14 ft. 9.2 in.)	4.5 m (14 ft. 9.2 in.)	4.5 m (14 ft. 9.2 in.)
F Overall Length, Bucket on Ground	11.69 m (38 ft. 4.2 in.)	11.90 m (39 ft. 0.5 in.)	12.13 m (39 ft. 9.6 in.)	12.35 m (40 ft. 6.2 in.)	12.23 m (40 ft. 1.5 in.)	12.45 m (40 ft. 10.2 in.)	12.15 m (39 ft. 10.3 in.)	12.36 m (40 ft. 6.6 in.)
G Height to Hinge Pin, Fully Raised	5.35 m (17 ft. 6.6 in.)	5.81 m (19 ft. 0.7 in.)	5.35 m (17 ft. 6.6 in.)	5.81 m (19 ft. 0.7 in.)	5.35 m (17 ft. 6.6 in.)	5.81 m (19 ft. 0.7 in.)	5.35 m (17 ft. 6.6 in.)	5.81 m (19 ft. 0.7 in.)
H Dump Clearance, 45 deg., Full Height	3.88 m (12 ft. 8.8 in.)	4.34 m (14 ft. 2.9 in.)	3.69 m (12 ft. 1.3 in.)	4.15 m (13 ft. 4.0 in.)	3.62 m (11 ft. 10.5 in.)	4.07 m (13 ft. 4.2 in.)	3.61 m (11 ft. 10.1 in.)	4.07 m (13 ft. 4.2 in.)
I Reach, 45-deg. Dump, Full Height	1.95 m (6 ft. 4.8 in.)	1.84 m (6 ft. 0.4 in.)	1.94 m (6 ft. 4.4 in.)	1.83 m (6 ft. 0.05 in.)	2.01 m (6 ft. 7.1 in.)	1.90 m (6 ft. 2.8 in.)	2.00 m (6 ft. 6.7 in.)	1.90 m (6 ft. 2.8 in.)
J Reach, 45-deg. Dump, 2.13-m (7 ft.) Clearance	2.87 m (9 ft. 5.0 in.)	3.09 m (10 ft. 1.7 in.)	2.81 m (9 ft. 2.6 in.)	3.04 m (9 ft. 11.7 in.)	2.85 m (9 ft. 4.2 in.)	3.08 m (10 ft. 1.3 in.)	2.85 m (9 ft. 4.2 in.)	3.08 m (10 ft. 1.3 in.)
K Maximum Digging Depth	0.26 m (10.2 in.)	0.25 m (9.8 in.)	0.23 m (9.1 in.)	0.22 m (8.7 in.)	0.24 m (9.5 in.)	0.22 m (8.7 in.)	0.25 m (9.8 in.)	0.23 m (9.1 in.)
L Maximum Rollback at Ground Level	43 deg.	43 deg.	48 deg.	48 deg.	48 deg.	48 deg.	48 deg.	48 deg.
M Maximum Rollback, Boom Fully Raised	64 deg.	64 deg.	69 deg.	69 deg.	70 deg.	70 deg.	69 deg.	69 deg.
N Maximum Bucket Dump Angle, Fully Raised	50 deg.	50 deg.	45 deg.	45 deg.	45 deg.	45 deg.	45 deg.	45 deg.
O Loader Linkage Clearance, Full Height	4.40 m (14 ft. 5.2 in.)	4.87 m (15 ft. 11.7 in.)	4.40 m (14 ft. 5.2 in.)	4.87 m (15 ft. 11.7 in.)	4.40 m (14 ft. 5.2 in.)	4.87 m (15 ft. 11.7 in.)	4.40 m (14 ft. 5.2 in.)	4.87 m (15 ft. 11.7 in.)
Loader Clearance Circle, Bucket Carry Position	17.90 m (58 ft. 8.7 in.)	18.10 m (59 ft. 4.6 in.)	17.03 m (55 ft. 10.5 in.)	18.24 m (59 ft. 10.1 in.)	18.08 m (59 ft. 3.8 in.)	18.30 m (60 ft. 0.5 in.)	18.05 m (59 ft. 2.6 in.)	18.25 m (59 ft. 10.5 in.)

944 X-TIER

While general information, pictures, and descriptions are provided, some illustrations and text may include product options and accessories NOT AVAILABLE in all regions, and in some countries products and accessories may require modifications or additions to ensure compliance with the local regulations of those countries.

Dimensions and Specifications

With Pin-On Bucket (continued)

944 X-TIER STANDARD BOOM / LONG BOOM

Specifications With Bucket	7.65-m ³ (10.0 cu. yd.) general-purpose pin-on bucket w/ bolt-on cutting (BOC) edge		6.88-m ³ (9.0 cu. yd.) spade-nose rock bucket w/ TK550 adapters and TK550LD penetration Teeth kit		7.65-m ³ (10.0 cu. yd.) spade-nose rock bucket w/ TK550 adapters and TK550LD penetration teeth kit		6.5-m ³ (8.5 cu. yd.) heavy-duty granite spade-nose rock bucket w/ TK550 adapters, wear liners, top cutting-edge protection, and TK550LDH abrasion teeth kit w/ Max Wear Protection	
	Standard Boom	Long Boom	Standard Boom	Long Boom	Standard Boom	Long Boom	Standard Boom	Long Boom
Capacity, Heaped	7.65 m ³ (10.0 cu. yd.)	7.65 m ³ (10.0 cu. yd.)	6.88 m ³ (9.0 cu. yd.)	6.88 m ³ (9.0 cu. yd.)	7.65 m ³ (10.0 cu. yd.)	7.65 m ³ (10.0 cu. yd.)	6.50 m ³ (8.5 cu. yd.)	6.50 m ³ (8.5 cu. yd.)
Capacity, Struck	6.60 m ³ (8.60 cu. yd.)	6.60 m ³ (8.60 cu. yd.)	6.25 m ³ (8.15 cu. yd.)	6.25 m ³ (8.15 cu. yd.)	6.60 m ³ (8.60 cu. yd.)	6.60 m ³ (8.60 cu. yd.)	5.80 m ³ (7.60 cu. yd.)	5.80 m ³ (7.60 cu. yd.)
Bucket Weight With Bolt-On Cutting Edge	5488 kg (12,100 lb.)	5488 kg (12,100 lb.)	6144 kg (13,545 lb.)	6144 kg (13,545 lb.)	6482 kg (14,291 lb.)	6482 kg (14,291 lb.)	7416 kg (16,349 lb.)	7416 kg (16,349 lb.)
Bucket Width								
Without Side Kickers	3.92 m (12 ft. 10.5 in.)	3.92 m (12 ft. 10.5 in.)	4.06 m (13 ft. 4.0 in.)	4.06 m (13 ft. 4.0 in.)	4.06 m (13 ft. 4.0 in.)	4.06 m (13 ft. 4.0 in.)	4.06 m (13 ft. 4.0 in.)	4.06 m (13 ft. 4.0 in.)
With Side Kickers	4.34 m (14 ft. 2.9 in.)	4.34 m (14 ft. 2.9 in.)	4.48 m (14 ft. 8.3 in.)	4.48 m (14 ft. 8.3 in.)	4.48 m (14 ft. 8.3 in.)	4.48 m (14 ft. 8.3 in.)	4.48 m (14 ft. 8.3 in.)	4.48 m (14 ft. 8.3 in.)
Breakout Force	47 568 kg (104,869 lb.)	47 747 kg (105,264 lb.)	43 500 kg (95,901 lb.)	43 660 kg (96,254 lb.)	41 059 kg (90,519 lb.)	41 212 kg (90,857 lb.)	40 795 kg (89,937 lb.)	40 949 kg (90,277 lb.)
Tipping Load, Straight								
No Tire Deflection	39 411 kg (86,886 lb.)	35 918 kg (79,186 lb.)	39 590 kg (87,281 lb.)	35 958 kg (79,274 lb.)	38 023 kg (83,826 lb.)	34 574 kg (76,223 lb.)	37 831 kg (83,403 lb.)	34 260 kg (75,530 lb.)
With Tire Deflection	37 674 kg (83,057 lb.)	34 401 kg (75,841 lb.)	37 797 kg (83,328 lb.)	34 398 kg (75,835 lb.)	36 303 kg (80,034 lb.)	33 075 kg (72,918 lb.)	36 090 kg (79,565 lb.)	32 742 kg (72,184 lb.)
Tipping Load, 37-deg. Partial Turn, No Tire Deflection	34 841 kg (76,811 lb.)	31 654 kg (69,785 lb.)	34 907 kg (76,957 lb.)	31 596 kg (69,657 lb.)	33 478 kg (73,806 lb.)	30 331 kg (66,868 lb.)	33 189 kg (73,169 lb.)	29 932 kg (65,989 lb.)
Tipping Load, 40-deg. Full Turn								
No Tire Deflection	34 102 kg (75,182 lb.)	30 964 kg (68,264 lb.)	34 150 kg (75,288 lb.)	30 890 kg (68,101 lb.)	32 742 kg (72,184 lb.)	29 645 kg (65,356 lb.)	32 437 kg (71,511 lb.)	29 232 kg (64,445 lb.)
With Tire Deflection	31 965 kg (70,471 lb.)	29 076 kg (64,102 lb.)	31 947 kg (70,431 lb.)	28 950 kg (63,824 lb.)	30 627 kg (67,521 lb.)	27 774 kg (61,231 lb.)	30 297 kg (66,793 lb.)	27 345 kg (60,285 lb.)
Rated Operating Capacity, 50% Full- Turn Tipping Load, With Tire Deflection (conforms to ISO 14397-1)*	15 983 kg (35,236 lb.)	14 538 kg (32,051 lb.)	15 974 kg (35,217 lb.)	14 475 kg (31,912 lb.)	15 314 kg (33,792 lb.)	13 887 kg (30,616 lb.)	15 149 kg (33,398 lb.)	13 673 kg (30,144 lb.)
Operating Weight	54 253 kg (119,607 lb.)	54 597 kg (120,366 lb.)	54 908 kg (121,051 lb.)	55 252 kg (121,810 lb.)	55 247 kg (121,799 lb.)	55 591 kg (122,557 lb.)	56 180 kg (123,856 lb.)	56 524 kg (124,614 lb.)

Loader operating information is based on machine with identified linkage and standard equipment, PowerTech PSS6135 (EPA Final Tier 4/EU Stage IV) engine, ROPS cab, rear cast bumper/counterweight, transmission side-frame guards, bottom guards, standard tires, full fuel tank, and 79-kg (175 lb.) operator. This information is affected by changes in tires, ballast, and different attachments.

*Rated operating capacity based on Deere attachments only.

Adjustments to Operating Weights and Tipping Loads With Buckets

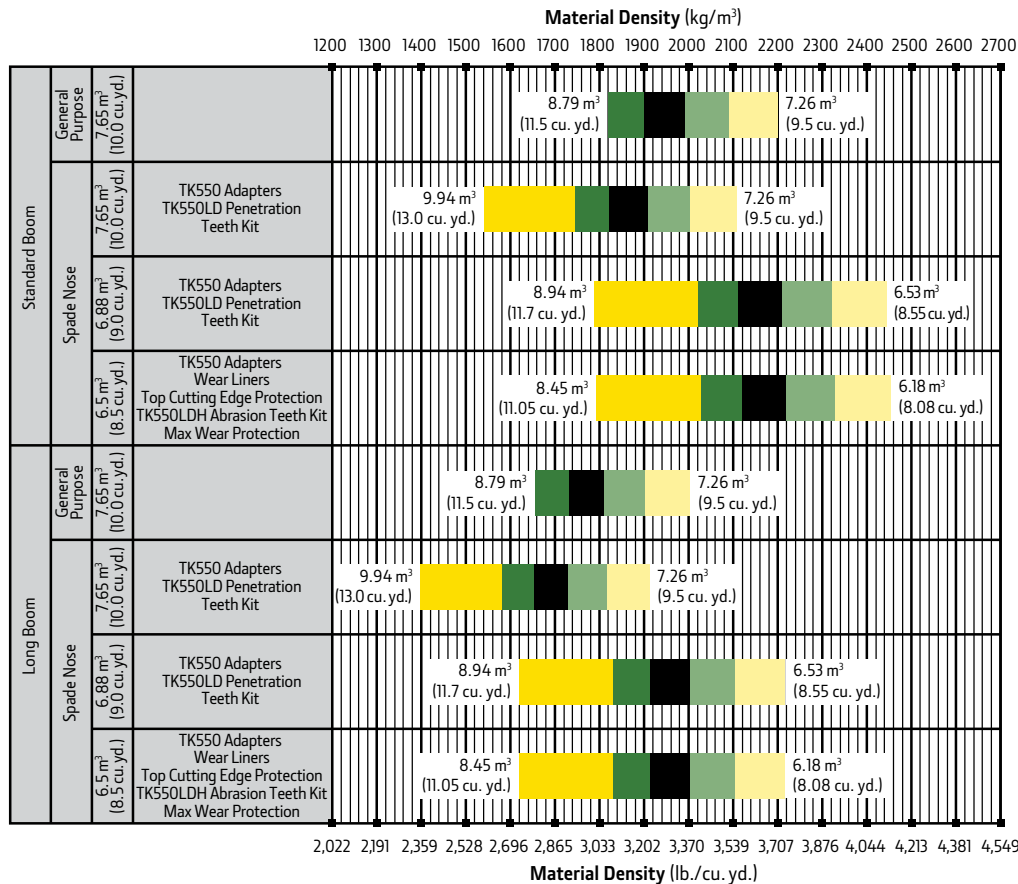
944 X-TIER STANDARD BOOM / LONG BOOM

Adjustments to operating weights, tipping loads, and tires are based on standard-boom machine with pin-on 6.88-m³ (9.0 cu. yd.) spade-nose rock bucket with bolt-on cutting edge, ROPS cab, rear cast bumper/counterweight, transmission side-frame guards, bottom guards, standard tires, full fuel tank, and 79-kg (175 lb.) operator*

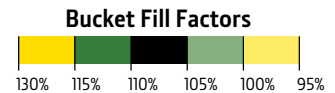
Add (+) or deduct (–) kg (lb.) as indicated for loaders with 3-piece rims	Operating Weight	Tipping Load, Straight	Tipping Load, 37-deg. Partial Turn	Tipping Load, 40-deg. Full Turn	TreadWidth	Width Over Tires	Vertical Height	Rated Operating Capacity
Michelin 35/65R33 XXXL L4 3 Star	0 kg (0 lb.)	0 kg (0 lb.)	0 kg (0 lb.)	0 kg (0 lb.)	0 mm (0 in.)	0 mm (0 in.)	0 mm (0 in.)	0 kg (0 lb.)
Bridgestone 35/65R33 VSNT L4 2 Star	+707 kg (+1,557 lb.)	+521 kg (+1,149 lb.)	+469 kg (+1,034 lb.)	+461 kg (+1,016 lb.)	0 mm (0 in.)	0 mm (0 in.)	+23 mm (+0.9 in.)	+231 kg (+508 lb.)
Michelin 35/65R33 XLDD2 L5 2 Star	+491 kg (+1,082 lb.)	+607 kg (+1,338 lb.)	+548 kg (+1,208 lb.)	+539 kg (+1,188 lb.)	0 mm (0 in.)	0 mm (0 in.)	+62 mm (+2.4 in.)	+270 kg (+595 lb.)
Michelin 35/65R33 XMINED2 L5 2 Star	+1007 kg (+2,220 lb.)	+876 kg (+1,931 lb.)	+789 kg (+1,739 lb.)	+775 kg (+1,709 lb.)	0 mm (0 in.)	+14 mm (+0.6 in.)	+19 mm (+0.7 in.)	+388 kg (+855 lb.)
Bridgestone 35/65R33 VSDL L5 2 Star	+1307 kg (+2,881 lb.)	+1363 kg (+3,005 lb.)	+1229 kg (+2,709 lb.)	+1208 kg (+2,663 lb.)	0 mm (0 in.)	–27 mm (–1.06 in.)	+19 mm (+0.7 in.)	+604 kg (+1,332 lb.)
Bridgestone 35/65–33 DL L5 42 Ply	+1747 kg (+3,851 lb.)	+1630 kg (+3,594 lb.)	+1469 kg (+3,239 lb.)	+1443 kg (+3,181 lb.)	0 mm (0 in.)	–11 mm (–0.4 in.)	+53 mm (+2.1 in.)	–2425 kg (–5,346 lb.)

*May change based on vehicle configuration, weight, or tire-pressure adjustments.

Bucket Selection Guide



LOOSE MATERIALS	kg/m ³	lb./cu. yd.
Chips, pulpwood	288	486
Cinders (coal, ashes, clinkers)	673	1,134
Clay and gravel, dry	1602	2,700
Clay, compact, solid	1746	2,943
Clay, dry in lump loose	1009	1,701
Clay, excavated in water	1282	2,160
Coal, anthracite, broken, loose	865	1,458
Coal, bituminous, moderately wet	801	1,350
Earth, common loam, dry	1218	2,052
Earth, mud, packed	1843	3,105
Granite, broken	1538	2,592
Gypsum	2275	3,834
Limestone, coarse, sized	1570	2,646
Limestone, mixed sizes	1682	2,835
Limestone, pulverized or crushed	1362	2,295
Sand, damp	2083	3,510
Sand, dry	1762	2,970
Sand, voids, full of water	2083	3,510
Sandstone, quarried	1314	2,214
Shale, broken crushed	1362	2,295
Slag, furnace granulated	1955	3,294
Stone or gravel, 37.5 to 87.5-mm (1.5 to 3.5") size	1442	2,430
Stone or gravel, 18.75-mm (3/4") size	1602	2,700



Additional equipment

Key: I Standard s Optional or special

See your John Deere dealer for further information.

944 X Engine	944 X Powertrain <i>(continued)</i>	944 X Hydraulics <i>(continued)</i>
I Wet-sleeve cylinder liners	I Self-adjusting wet-disc brakes	I 4,000-hour in-tank filters
I Programmable auto-idle and auto shutdown	I Spring-applied, hydraulically released, wet multi-disc park brake	I Ride control, automatic with monitor-adjustable speed settings
I Selected idle adjustment from 900–1,250 rpm	Quad-Cool™ Cooling System	s Hydrau™ XR cold-temperature hydraulic fluid recommended below –25 deg. C (–13 deg. F)
I Starter protection	I Heavy-duty, dust-resistant radiator and high-ambient cooling package	Steering Systems
I Automatic derating for exceeded system temperatures	I 2-side access to all coolers	I Joystick steering with range shift, F-N-R, and horn
I Serpentine drive belt for automatic tensioner	I Isolated from engine compartment	I 40-deg. steering articulation to each side with rubber-cushion stops on frame and hydraulic-relief valves
I Electrical fuel-priming pump	I Integral engine oil cooler	s Secondary steering
I Dual-stage fuel filter and water separator	I Hydraulic oil cooler (oil to air)	Electrical
I 500-hour vertical spin-on oil filter	I Charge air cooler (air to air)	I 150-amp alternator
I Engine-compartment light	I Engine radiator	I Batteries (2), 1,400 CCA each
s Chrome exhaust stack	I Generator and pump-drive gearbox cooler (oil to air)	s Batteries (4), 1,400 CCA each
s Automatic ether starting aid (recommended for cold starts below –12 deg. C [10 deg. F])	I Power electronics cooler (antifreeze to air)	I Solid-state electrical power-distribution system
s Engine-block heater (recommended for cold starts below –23 deg. C [–10 deg. F])	I Wheel motor, service brake, and final-drive oil coolers (oil to air)	I Lockable master electrical-disconnect switch
I Centrifugal engine air pre-cleaner	I Coolant recovery tank	I Starter and engine lockout in bumper
Powertrain	I Antifreeze, –37 deg. C (–34 deg. F)	I By-pass start safety cover at starter
I Hybrid-electric drivetrain	I Cool-on-demand, hydraulically driven, swing-out fan	I Pre-wired for beacon/strobe light
I Brushless A/C electric motor at each wheel	I Enclosed fan safety guard	I LED package: Drive lights (2) with guard / Brake and taillights / Work lights (front cab [4], rear cab [2], rear machine [2], and turn signals and hazards) / Halogen work lights (platform [2] and engine compartment light [1])
I Brushless A/C electric generators (2)	I Automatic reversing fan drive	s Deluxe LED package: Includes extra work lights (2) next to drive lights and extra front cab LED work lights (2)
I Solid-state power electronics	Hydraulics	I Turn signals and hazards
I Programmable maximum high-speed range	I Electronically controlled load-sensing hydraulic system	I Programmable courtesy lights
I Drivetrain diagnostic ports	I Electrohydraulic (EH) controls	
I Automatic traction control	I 2 function — 2-lever fingertip controls	
I Rimpull control	I In-cab adjustable automatic return-to-dig bucket positioner	
I Coast control	I In-cab adjustable automatic boom-height kickout/return to carry	
	I Reservoir with sight gauge and fill strainer	
	I Hydraulic diagnostic ports	

While general information, pictures, and descriptions are provided, some illustrations and text may include product options and accessories NOT AVAILABLE in all regions, and in some countries products and accessories may require modifications or additions to ensure compliance with the local regulations of those countries.

Net engine power is with standard equipment including air cleaner, exhaust system, alternator, and cooling fan at test conditions per ISO 9249. No derating is required up to 3050-m (10,000 ft.) altitude. Specifications and design subject to change without notice. Specifications with the exception of bucket capacity are in accordance with all applicable ISO standards. Except where otherwise noted, these specifications are based on a unit with applicable linkage and standard equipment, ROPS cab, rear cast bumper/counterweight, transmission side-frame and crankcase guards, front-frame bottom guard, standard tires, full fuel tank, and 79-kg (175 lb.) operator.

Additional equipment (cont.)

Key: I Standard s Optional or special

See your John Deere dealer for further information.

944 X Electrical (continued)

- I Stairway lighting with ground-level and in-cab switches
- I Horn, electric
- I Reverse warning alarm
- I Multifunction/multi-language LCD color monitor includes: Digital instruments — Analog display (hydraulic oil temperature, engine coolant temperature, drive system oil temperature, and engine oil pressure) / Digital display (engine rpm, drive system range/direction indicator, hour meter, fuel level, speedometer, odometer, average fuel consumption, and outside temperature)
- I Integrated cycle counter with 5 categories
- I Indicator lights: Standard and selected options / Amber caution and red stop
- I Operator-warning messages
- I Built-in diagnostics: Diagnostic-code details / Sensor values / Calibrations / Individual circuit tester
- s Electrical corrosion-prevention package for 24-volt system only
- I AM/FM/Weather Band (WB) radio with remote auxiliary port
- s Premium AM/FM/WB radio with Bluetooth®, remote auxiliary port, and remote USB port
- I 24- to 12-volt, 15-amp converter
- s 24- to 12-volt, 30-amp converter

Operator's Station

- I Quiet Cab with air conditioning/heater (ROPS/FOPS Level 1, isolation mounted)
- I Keyless start with multiple security modes
- I Sealed-switch module with function indicators

944 X Operator's Station (continued)

- I Premium seat with high-wide back and headrest extension, heated, ventilated, leather/fabric cover, pan tilt, pan extend, air suspension, and adjustable damping
- I Hydraulic controls integrated to seat
- I High-visibility, bright-orange seat belt, 76 mm (3 in.), with retractor
- I Cup holder
- I Lunch-box/cooler holder
- I Dome and reading light
- I 12-volt power ports (2)
- I Rubber floor mat
- I Operator's manual storage compartment
- I Outside (2) and inside (1) rearview mirrors
- s Large heated outside mirrors
- I Left-side operator-station access
- I Sun visor
- I Front and rear intermittent windshield wiper and washers
- I Powered cab air pre-cleaner
- s Beacon bracket
- I Rearview camera
- s Fire extinguisher
- I Certified anchor points on cab roof

Loader Linkage

- I Z-Bar standard-length boom loader linkage
- s Z-Bar long boom loader linkage

Overall Vehicle

- I JDLink™ wireless communication system (available in specific countries; see your dealer for details)
- I Bushed pin joints (including static joints on bucket and steering cylinders)
- s Hydraulically driven Lincoln Centro-Matic® automatic lubrication system

944 X Overall Vehicle (continued)

- I Front, mid, and rear tie-downs
- I Rear cast bumper with rear hitch and locking pin
- I Articulation locking bar
- I Vandal protection with lockable engine enclosures, right counterweight storage, battery box, and filler access for radiator/fuel/hydraulic transmission
- I Right and left handrails, platforms with toe kicks, and steps
- I Slip-resistant steps and ergonomic handholds
- I Right-side ground-level service center
- I Storage compartment
- I Ground-level diesel exhaust fluid (DEF) and fuel fill with strainer
- s Fast-fuel system
- I Heavy-duty fuel-tank guard
- I Same-side daily servicing
- I Environmental drains for engine, drive system, hydraulic oils, and engine coolant
- I Fluid-sampling ports for engine, drive system, hydraulic and final-drive oils, and coolants
- I 35/65-33 or 35/65R33 tires on 5-piece rims
- s Tire-pressure monitoring system
- I Level 1 sound package
- I Level 2 sound package
- I Transmission side-frame and crankcase guards
- I Front-frame bottom guard
- s Quick fluid service (engine, transmission, hydraulic oils, and engine coolant)
- I Fenders, front and rear
- s Rooding fenders, full-coverage, front and rear

While general information, pictures, and descriptions are provided, some illustrations and text may include product options and accessories NOT AVAILABLE in all regions, and in some countries products and accessories may require modifications or additions to ensure compliance with the local regulations of those countries.

Net engine power is with standard equipment including air cleaner, exhaust system, alternator, and cooling fan at test conditions per ISO 9249. No derating is required up to 3050-m (10,000 ft.) altitude. Specifications and design subject to change without notice. Specifications with the exception of bucket capacity are in accordance with all applicable ISO standards. Except where otherwise noted, these specifications are based on a unit with applicable linkage and standard equipment, ROPS cab, rear cast bumper/counterweight, transmission side-frame and crankcase guards, front-frame bottom guard, standard tires, full fuel tank, and 79-kg (175 lb.) operator.



JOHN DEERE