



JOHN DEERE

768L-III BOGIE SKIDDER





768L-III BOGIE SKIDDER

RELIABLE WARRIOR IN THE WOODS.

When loggers like you tell us what they need to succeed in the woods and at the landing, we listen and then get to work putting ideas into action. Based on some of your best input, the John Deere 768L-III Bogie Skidder boasts new operator assistance, productivity awareness, and feedback features. And refinements in jobsite-mapping capability and machine maintenance help make it efficient to operate and reliable to own. The 768L-III is purpose-built to take on tough forestry tasks and come back for more.

Ground-game changer

For work in wet, muddy conditions, the 768L-III Bogie Skidder can turn the tide. Combining tenacious tractive ability and flotation with reduced ground pressure, this six-wheel specialist is designed to carry large loads long distances.

Take control in comfort

Spacious and quiet standard cab boasts an adjustable new durable-cloth seat and integrated TimberMatic™ Maps. Premium cab option includes set-and-forget Automatic Temperature Control system, cameras, secondary display unit, and other operator-assistance features. Optional premium leather seat that's heated, vented, and adjustable seven ways takes operator comfort to the next level. Operators are now able to select three different seat positions including facing the right-side door

See things like never before

Available with the premium cab package, new blade-view camera enables clear visibility to attachments as you work the jobsite. Secondary touch-screen display provides intuitive access to cameras, slope details, and machine information.



**NEAR-REAL-TIME
PRODUCTIVITY DETAILS
HELP BOOST EFFICIENCY**

Balance of power

The 768L-III features balanced bogie axles that help reduce machine vibration to deliver a comfortably smooth ride plus outstanding traction and flotation in wet and muddy terrain.

Effortless operation

Armrest-mounted electrohydraulic controls provide easy, fingertip operation of all machine functions.

Best of both worlds

Continuously Variable Transmission (CVT) combines the efficiency of direct drive with the smoothness and operating ease of hydrostatic drive. Automatically sensing the load, CVT delivers torque and tractive effort as needed to maintain the maximum speed the operator sets, helping reduce engine wear, optimize fuel economy, and eliminate manual shifting.

Large and in charge

Optional 2.07-square-meter (22.3 square foot) grapple on the 768L-III helps you deliver more wood to the landing with fewer skids.

Productive as you run

Digital solutions that monitor operator work statistics, travel/trip-meter capability, and advanced map layers help keep track of important operational basics. Near-real-time production and operator-performance reporting to business owners and managers allows informed analysis of owning and operating costs.

768L-III BOGIE SKIDDER

***PUT TECHNOLOGY TO WORK
IN THE WOODS AND AT THE OFFICE.***

Coordinate your operation and your team's productivity from wherever your work takes you with John Deere Precision Forestry and our core technology solutions.

FEATURES

Core intelligence

Your John Deere Forestry machine arrives from the factory equipped with a powerful set of technologies and capabilities already built in. Each plays an important role in managing the health and performance of your overall equipment fleet:

- **John Deere Connected Support**, utilizing advanced, forestry machine-specific data, helps your dealer take immediate action on any issues with your machine.
- **Remote Display Access** allows dealers to remotely see exactly what the operator is seeing and access the vast onboard diagnostics capabilities of the TimberMatic™ automation system. The ability to adjust the machine and assist the operator remotely helps keep machines up and running.
- The **Machine Health and Performance Monitoring** service is offered in conjunction with advanced John Deere Protect™ Service Agreements. By utilizing advanced forestry machine data and benchmarking capabilities, this service provides unparalleled insights into different machine functions and helps take corrective actions early, ensuring a consistently high-performing fleet.

Digital solutions

Take the guesswork out of planning, implementing, and monitoring your logging operation. The tools of our production-planning and -tracking system expand on the core technology features that come standard in every John Deere Forestry machine to unleash a powerful new array of possibilities:

- **TimberMatic™ Maps** is an innovative onboard software solution that helps you reimagine your jobsites. Near-real-time production views, optimized routes, and a shared cloud connection make it easier than ever before to take your forestry operation to the next level.
- **TimberManager™** is a web-based solution for PCs, tablets, and mobile phones that allows you to follow jobsite progress. Combined with TimberMatic Maps, this software provides complete visibility of your operation — from land harvested to specific machines — so you can streamline communication, analyze tasks, and increase productivity:
 - **Remote Monitoring** keeps tabs on the health and performance of your fleet from wherever you are.
 - **Precise Progress Tracking** lets you set goals for your team to meet throughout the day.
 - **Live Production View** displays progress including tree count, area harvested, and estimated tonnage.
 - **Simplified Mapping** of machine data and GPS-based location tracking shows precise stem and log counts.
 - **Real-Time Updates** let you adjust course or eliminate tasks if needed to maintain steady workflow.
 - **Fleet Optimization** goes beyond machine management to help improve the efficiency of your business.



**JOHN DEERE
CONNECTED SUPPORT™**

CONNECTS YOUR OPERATION
TO DEALER & FACTORY EXPERTISE

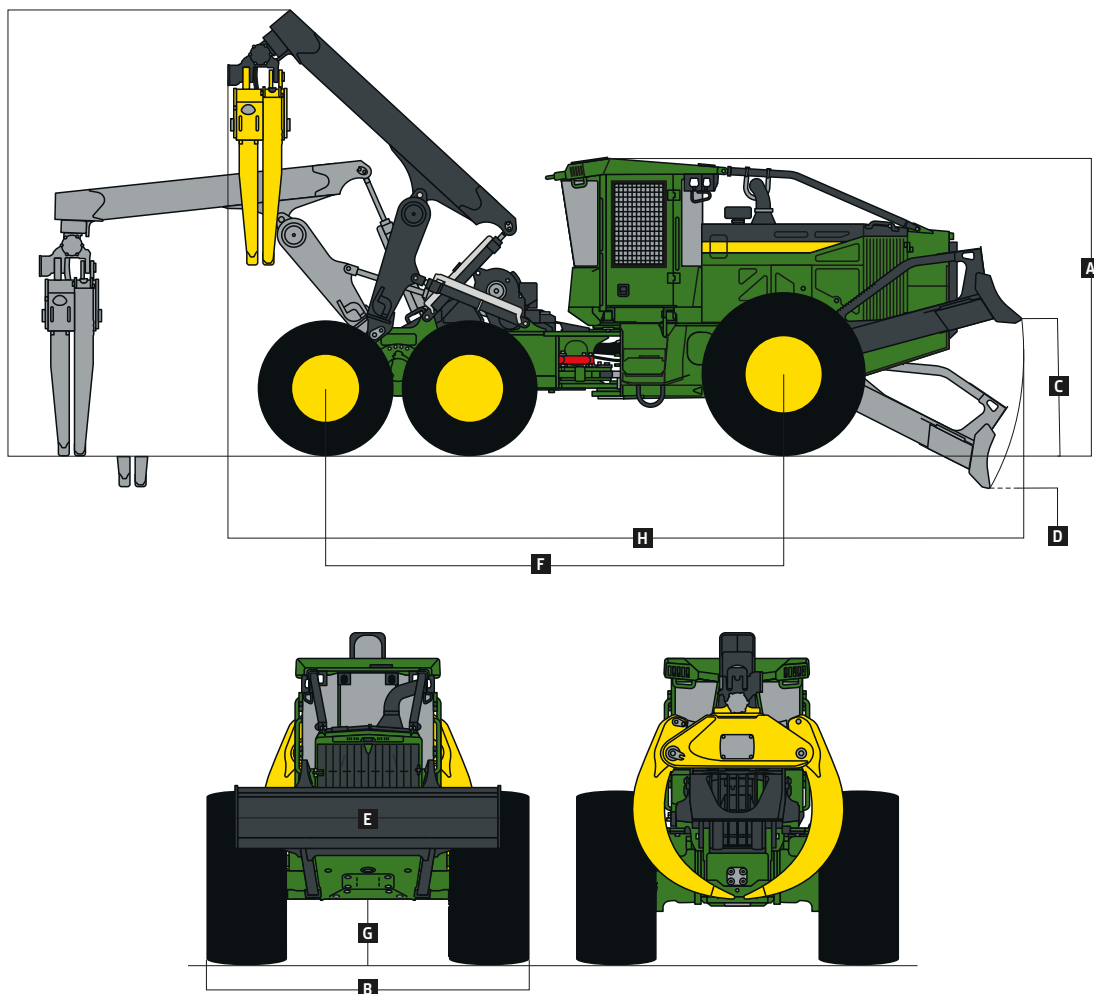
768L-III *BOGIE SKIDDER SPECIFICATIONS*

Engine		
Manufacturer and Model	John Deere PowerTech™ PSS 9.0 L	John Deere PowerTech™ Plus 9.0 L
Non-Road Emission Standards	EPA Final Tier 4 (FT4)/EU Stage V	EPA Tier 3/EU Stage IIIA
Gross Power	210 kW (281 hp) at 1,800 rpm	210 kW (281 hp) at 1,800 rpm
Gross Torque	1276 Nm (941 ft.-lb.) at 1,400 rpm	1276 Nm (941 ft.-lb.) at 1,400 rpm
Number of Cylinders	6	6
Valves per Cylinder	4	4
Engine Displacement	9.0 L (549 cu. in.)	9.0 L (549 cu. in.)
Engine Bore and Stroke	118.4 x 136 mm (4.66 x 5.35 in.)	118.4 x 136 mm (4.66 x 5.35 in.)
Fuel System	High-pressure common rail	High-pressure common rail
Aspiration	Turbocharged and charge-air cooled	Turbocharged and charge-air cooled
Air Cleaner	Dual stage with safety element	Dual stage with safety element
Engine Cold-Start System	Auto ether	Auto ether
Cooling		
Cooling System	Heavy-duty radiator with continuous deaeration tank and recovery reservoir	
Fan Drive	Hydraulic, variable speed, reversing	
Powertrain		
Transmission	Continuously Variable Transmission (CVT)	
Number of Speed Ranges, Forward and Reverse	6	
Travel Speeds With 30.5-32 Front Tires	Forward and Reverse	
Range 1 (factory settings for each speed range)	4.79 km/h (2.97 mph)	
Range 2	6.38 km/h (3.96 mph)	
Range 3	8.61 km/h (5.35 mph)	
Range 4	12.40 km/h (7.70 mph)	
Range 5	15.19 km/h (9.44 mph)	
Range 6	17.97 km/h (11.16 mph)	
Axles	1425 Super-Wide Extreme-Duty Axle (SWEDA™) front / bogie-axle rear	
Front Axle Oscillation, Stop to Stop	30 deg.	
Differential (front and rear)	Hydraulic-locking, operated-on-the-go, differential lock	
Steering	Fully hydraulic, joystick	
Articulation Angle	45-deg. each direction	
Service Brakes	Inboard-mounted, wet-disc, oil-cooled, front and rear axles	
Parking Brake	Automatically spring-applied, hydraulically released, sealed and lubricated, wet multi-disc	
Hydraulics		
Main Pump	Open circuit, axial piston, variable displacement	
Maximum Displacement	85 cc/rev (5.19 ci/rev)	
Electrical System		
Voltage	24 volt	
Number of Batteries (12 volt)	2	
Battery Capacity (each)	950 CCA	
Alternator Rating	150 amp	
Worklights	11 standard / 15 optional with 3 service lights	
Dual-Function Grapples		
Boom	3.7 m (12 ft.)	Optional
Grapple Control	Joystick	Opening
Standard		Area
Opening	3785 mm (149 in.)	3886 mm (153 in.)
Area	1.77 m² (19.1 sq. ft.)	1.63 m² (17.5 sq. ft.)
Optional		Opening
Opening		3886 mm (153 in.)
Area		2.07 m² (22.3 sq. ft.)
Refill Capacities		
Fuel Tank		
Standard	352.0 L (93.0 gal.)	
Optional	496.6 L (131.2 gal.)	
Hydraulic Reservoir	123.6 L (32.6 gal.)	
Diesel Exhaust Fluid (DEF) Tank	19.9 L (5.2 gal.)	
Operating Weight		
Machine Weight	23 697 kg (52,245 lb.)	
Dozer Blade		
Type	Heavy-Duty Stacking Blade	Heavy-Duty Replaceable Cutting Edge (RCE)
Width	2962.4 mm (116.6 in.)	2962.4 mm (116.6 in.)
Height	687.6 mm (27.1 in.)	691.0 mm (27.2 in.)
Blade Control	Joystick	Joystick

Images and descriptions are for general information only. Some illustrations may depict product options or accessories NOT AVAILABLE in all regions or may require modifications to meet local regulations. Images of equipment models may be digitally or AI generated, are for illustration purposes only, and may not reflect actual products, features, options, or attachments. Equipment availability may be limited. For complete details, contact your John Deere dealer.

Winch		768L-III	
Winch Control	Joystick control, hydraulically driven	Line Pull – 15.8-mm (5/8 in.) Cable	<i>Bare Drum at Stall</i>
Cable Capacity	2-Speed 4000 Winch With 204-mm (8.03 in.) Drum	Low Speed	213.5 kN (47,997 lb.)
		High Speed	142.3 kN (31,990 lb.)
		Line Speed – 15.8-mm (5/8 in.) Cable	<i>Bare Drum at 1,800 rpm</i>
		Low Speed	13.4 m/min (44 fpm)
		High Speed	20.1 m/min (66 fpm)
Machine Dimensions		Machine Dimensions (continued)	
	<i>Dual Function</i>	G Ground Clearance	557 mm (21.9 in.)
	30.5-32 Front Axle /	H Overall Length	9075.3 mm (357.2 in.)
	780/50-28.5 Rear Axle	Shipping Dimensions	
Tire Size		Tire Size	30.5-32 Front Axle /
A Overall Height	3365 mm (132.5 in.)	Overall Height	780/50-28.5 Rear Axle
B Overall Width	3508 mm (138.1 in.)	Overall Width	3365 mm (132.5 in.)
C Maximum Blade Lift Above Ground	1517 mm (59.7 in.)	Shipping Length	3508 mm (138.1 in.)
D Maximum Blade Dig Below Ground	359 mm (14.1 in.)		11 100 mm (437.0 in.)
E Dozer Blade Width	2962.4 mm (116.6 in.)		
F Wheelbase	4416.7 mm (173.8 in.)		

768L-III Bogie Skidder With Dual-Function Grapple



Images and descriptions are for general information only. Some illustrations may depict product options or accessories NOT AVAILABLE in all regions or may require modifications to meet local regulations. Images of equipment models may be digitally or AI generated, are for illustration purposes only, and may not reflect actual products, features, options, or attachments. Equipment availability may be limited. For complete details, contact your John Deere dealer.



MSK768LIIIU (25-09)



JOHN DEERE