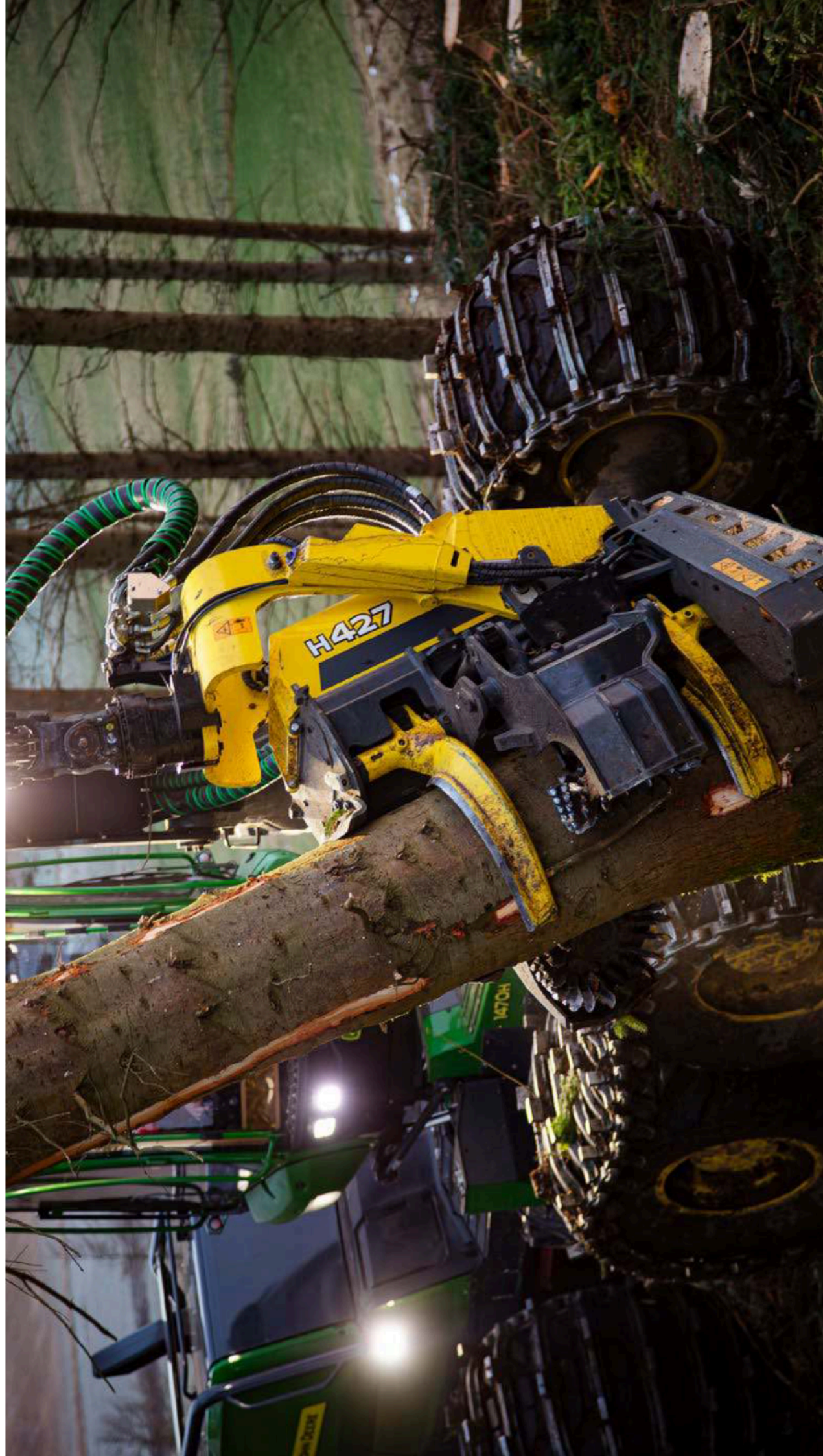


# HARVESTER HEADS



JOHN DEERE



## EASY, RELIABLE AND PRODUCTIVE

John Deere harvester heads are renowned for their productivity. Thanks to their advanced design, hydraulics and automation, they offer excellent performance, measurement accuracy and delimiting quality.

The robust design ensures durability, and the user-friendly control system provides unrivalled controllability. Daily maintenance is easy and can usually be carried out without having to change the position of the harvester head.

Our selection includes harvester heads for all felling needs, from early thinning to regeneration harvesting and from softwood to hardwood. With a wide range of optional equipment, the harvester head can be equipped to suit every logging site. The most popular optional equipment include grease lubrication, mass treatment, colour marking equipment and a top saw.

### A HIGH-PERFORMANCE COMBINATION

John Deere harvester heads work seamlessly with John Deere harvesters. The technical features of the combination are fine-tuned to serve productivity: efficient felling, smooth handling and highly accurate measurement.

## IHC IMPROVES DELIMITING QUALITY

Correct pressure adjustment of the delimiting knives is the basis for good and accurate operation of the harvester head. When determining the correct adjustment value, the size of the tree, the species and the felling conditions should be considered, among other factors.

Intelligent Harvester Head Control (IHC) is an optional feature of John Deere harvester heads that automatically adjusts the compression pressure of the delimiting knives for the best results.

Availability: H212, H216, H423, H424, H425/H425HD, H427

### IMPROVES ACCURACY

When the tree is pressed against the harvester head with the appropriate force, measurement accuracy is maintained.

### TIME SAVING

IHC reduces the need to adjust the harvester head during the working day.

### MAKES WORK EASIER

The operator sets the desired force level for the delimiting knives, and the IHC then measures and adjusts the compression force automatically.

### FUEL EFFICIENCY

When the compression pressure of the delimiting knives is not too high, fuel is not wasted.

### DURABILITY

The harvester head lasts longer as it is not subjected to unnecessary stress.

### QUALITY RESULTS

The trees are not debarked, nor is the surface layer damaged by excessively high blade pressures, thus preserving the value added.



# H200 SERIES HARVESTER HEADS

With two feed rollers, the harvester heads' design allows for controlled lateral movement of the trunk being processed, which is especially useful for handling crooked trees. The long frame of the harvester head stabilises operation during harvesting. Feeding is also smooth even for smaller top diameters.

KEY FIGURES	H212	H216	H219	H225E	HTH616C Series III
Compatible	1070G, 1170G	1270H, 1470H	1470H	1270H, 1470H	1470H
Feed roller opening	440 mm	700 mm	760 mm	550 mm	680 mm
Maximum cutting diameter	520 mm	750 mm	750 mm	550 mm	550 mm
Saw bar length, max	640 mm	900 mm	900 mm	670 mm	750 mm
Feed speed, max	5.5 m/s	6.4 m/s	6.0 m/s	5.0 m/s	5.0-8.0 m/s
Feed force, max	20 kN	30-41 kN	28-42 kN	27-31 kN	Several feed motor options
Weight	750 kg	1495 kg	1930 kg	1690 kg	1800 kg
Dismounting levers	3 moving, 2 fixed	4 moving, 2 fixed	4 moving, 1 fixed	4 moving, 1 fixed, 2 fixed debarking tools	2 moving, 2 fixed

## H212 A QUALITY PARTNER FOR THINNING

The H212 is an efficient and agile harvester head for thinning forests and harvesting energy wood. The model is narrow even when the rollers are fully open, making work easy even when thinning dense forests.

- + Compatible: 1070G, 1170G
- + Feed roller opening: 440 mm
- + Maximum cutting diameter: 520 mm
- + Saw bar length, max: 640 mm
- + Feed speed, max: 5.5 m/s
- + Feed force, max: 20 kN
- + Weight: 750 kg

IHC AVAILABLE



## H216 EFFORTLESS PRODUCTIVITY FOR LARGE HARVESTERS

The H216 is an easily customisable, high-performance harvester head for harvesters in the highest size class, suitable for hardwood and softwood. The high frame provides excellent support and the large tilt angle allows you to handle wood with ease. The harvester head can be easily equipped for temporary detaching heads.

- + Compatible: 120H, 160H
- + Feed roller opening: 700 mm
- + Maximum cutting diameter: 750 mm
- + Saw bar length: max 900 mm
- + Feed speed: max 6.4 m/s
- + Feed force: max 30-41 kN
- + Weight: 1495 kg

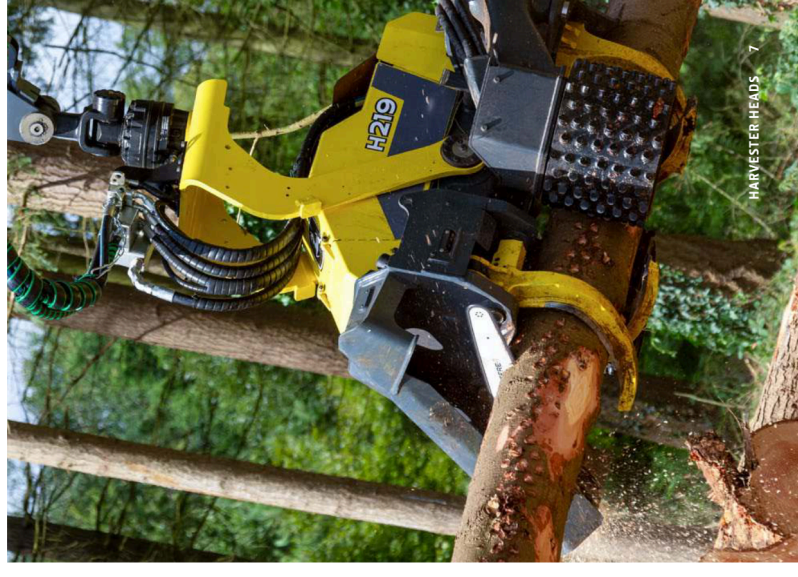
IHC AVAILABLE



## H219 SMOOTH HANDLING FOR LARGE TREES

The H219 features a robust design ideal for the largest harvesters. Feed power and speed are automatically adjusted to the size of the trunk, and curved trunks can also be processed smoothly.

- + Compatible: 160H
- + Feed roller opening: 760 mm
- + Maximum cutting diameter: 750 mm
- + Saw bar length: max 900 mm
- + Feed speed: max 6.0 m/s
- + Feed force: max 28-42 kN
- + Weight: 1930 kg



### H225E RELIABLE TOOL FOR EUCALYPTUS TREES

The H225E is an efficient and high-performance harvester head, especially for eucalyptus harvesting. The debarking result is excellent for both thick and thin trunks.

- + Compatible: 1270H, Y620H
- + Feed roller opening: 550 mm
- + Maximum cutting diameter: 350 mm
- + Saw bar length: max 670 mm
- + Feed speed: max 5.0 m/s
- + Feed force: max 27-30 kN
- + Weight: 1650 kg



### HTH616C SERIES III PRECISE AND EFFICIENT 3-ROLLER

The HTH616C Series-III is a 3-roller harvester head for demanding conditions. The extremely robust design is highly resistant to mechanical stress. A high-torque motor is also available to improve productivity in demanding debarking conditions. With the optional equipment, even small trees can be handled easily.

- + Compatible: Y620H
- + Feed roller opening: 680 mm
- + Maximum cutting diameter: 550 mm
- + Saw bar length: max 750 mm
- + Feed speed: max 5.0-8.0 m/s
- + Feed force - several feed motor options
- + Weight: 1800 kg



# H400 SERIES HARVESTER HEADS

The four-wheel-drive harvester heads ensure excellent grip for feeding. They provide high feed power in a relatively small size, and feeding is efficient without compromising measurement accuracy or delimiting quality.

KEY FIGURES	H423	H424	H425/H425HD	H427
Compatible	1070G, 1170G	1070G, 1170G, 1270H	1270H, 1470H	1270H, 1470H
Feed roller opening	560 mm	640 mm	680 mm	720 mm
Maximum cutting diameter	560 mm	620 mm	710 mm, 750 mm	760 mm
Saw bar length, max	750 mm	750 mm	900 mm	900 mm
Feed speed, max	5,6 m/s	6,0 m/s	6,0 m/s	5,9 m/s
Feed force, max	21 kN	22,27 kN	25,42 kN	40,46 kN
Weight	995 kg	1105 kg	1361 kg / 1399 kg	1650 kg
Delimiting knives	4 moving, 2 fixed	4 moving, 2 fixed	4 moving, 2 fixed	4 moving, 2 fixed

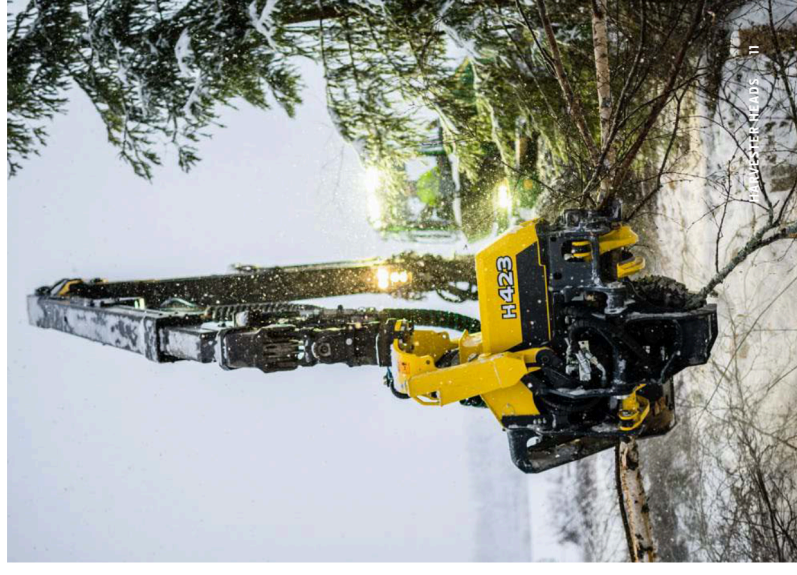
## PRODUCT INFORMATION

## H423 SMOOTH AND EASY THINNING

The H423 is a high-performance and easy-to-use harvester head for thinning and smaller trees.

- + Compatible: 1070G, 1170G
- + Feed roller opening: 560 mm
- + Maximum cutting diameter: 560 mm
- + Saw bar length, max: 750 mm
- + Feed speed, max: 5,6 m/s
- + Feed force, max: 21 kN
- + Weight: 995 kg

IRC AVAILABLE



## H424 SUSTAINABLE AGILITY FOR REGENERATION HARVESTING AND THINNING

The H424 is an agile harvester head for regeneration harvesting and thinning. The wide backward turning angle of the lift handle and excellent processing ability of curved trunks allow for smooth work even in challenging places.

- + Compatible: 1070G, 1170G, 1270H
- + Feed roller opening 640 mm
- + Maximum cutting diameter 620 mm
- + Saw bar length, max 750 mm
- + Feed speed, max 6.0 m/s
- + Feed force, max 22.27 kN
- + Weight: 1105 kg

IHC AVAILABLE

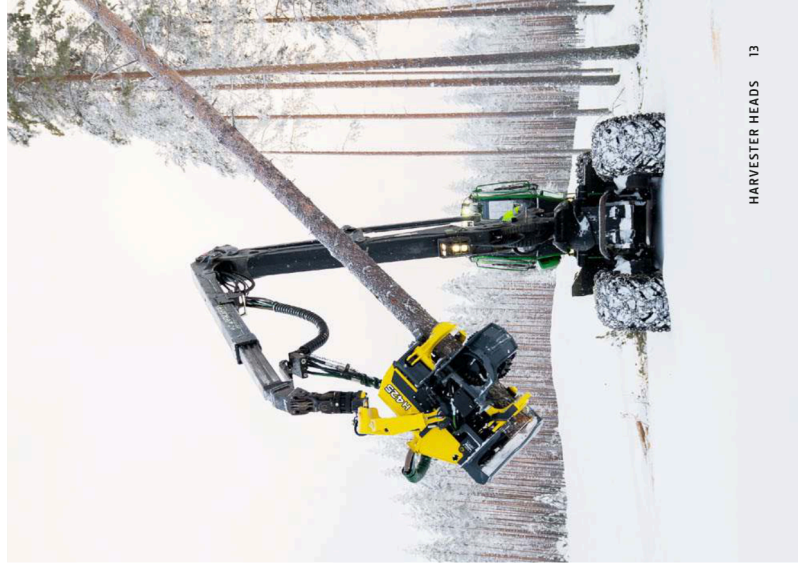


## H425/H425HD POWER AND DURABILITY FOR LARGE TREES

The H425 and H425HD are robust and versatile harvester heads for regeneration harvesting, thinning and large tree handling. Hose routing is protected inside the structures. The H425HD has feed motor guards and a strong tilt handle, and taper pins in the upper tilt cylinder, feed roller arms, and lower delimiting knives.

- + Compatible: 1270H, 1420H
- + Feed roller opening 680 mm
- + Maximum cutting diameter 710 mm, 750 mm
- + Saw bar length, max 900 mm
- + Feed speed, max 6.0 m/s
- + Feed force, max 25-42 kN
- + Weight: H425: 1360 kg, H425HD: 1399 kg

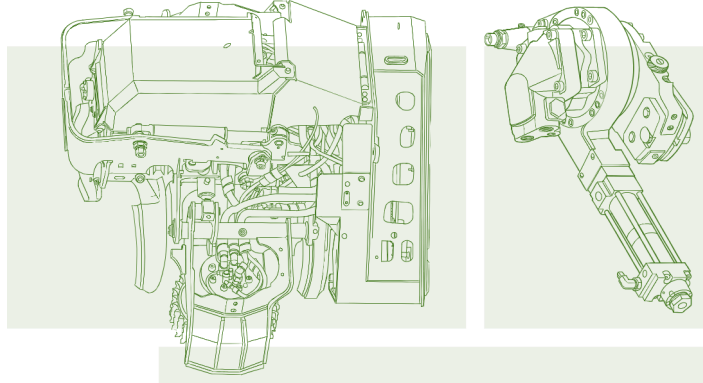
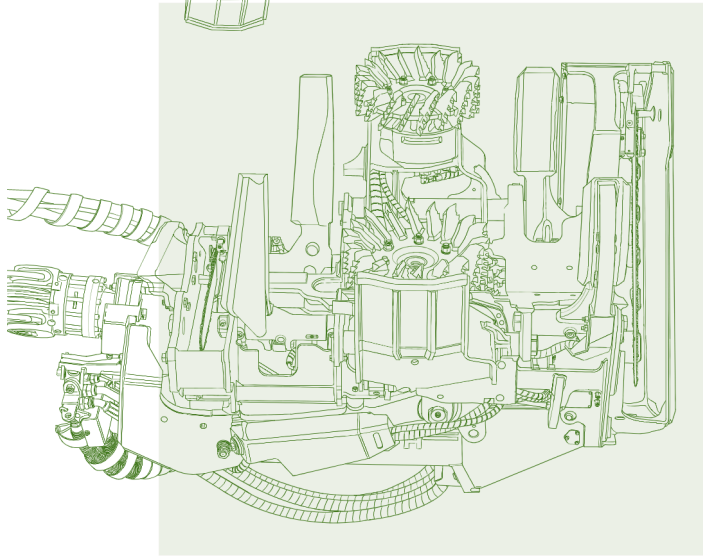
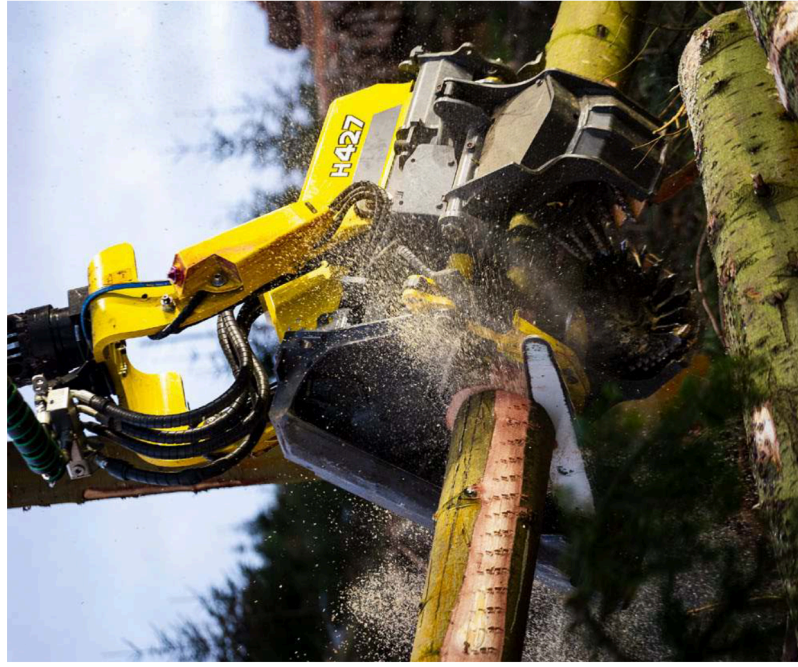
IHC AVAILABLE



## H427 THE BIGGEST, MOST POWERFUL AND BEST PERFORMING

The H427 is our most powerful harvester head for large trees. A strong frame and a wide 146,5 degree tilt angle ensure smooth operation even in more demanding environments.

- + Compatible: 1270H, 1620H
- + Feed roller opening: 720 mm
- + Maximum cutting diameter: 760 mm
- + Saw bar length: max 500 mm
- + Feed speed: max 55 m/s
- + Feed force: max 40-43 kN
- + Weight: 1650 kg





This brochure has been compiled for worldwide circulation. While general information, pictures, and descriptions are provided, some illustrations and text may include options and accessories not available in all regions. Please contact your local dealer for details. John Deere reserves the right to change product specifications and designs for products described in this brochure without notice. John Deere assumes no liability for errors and omissions.

Printed in Finland, 06/2025

[deere.co.uk](http://deere.co.uk)



**JOHN DEERE**